

Twynning Bulletin



The Newsletter of Twynning Parish Council

No. 135, October 2018



Above: Twyning Fete (Photos by Roy Thomas)

Front cover: Aerial view of Church End (Photo by Arthur Storey)

Editor's Introduction

Welcome to the autumn edition of the Twyning Bulletin. As always, when people send their submissions to me, I'm in awe of all the things that go on in what is essentially quite a small village! And not all of our groups or activities appear in every Bulletin, so this is only a snapshot. Do please take time to read through and see what everyone's up to – and as you'll see, there are lots of opportunities to join groups or events if you'd like to.

This is a community bulletin, so everyone is welcome to send in any reports or photographs that you think might interest your fellow residents.

Fiona Thornton, editor

(see p30 for contact details)

Contents

Keeping in Touch / Contacts	4	Twyning Parish Church	17
Planning Application	5	Longdon Probus Club	18
Acorns Children's Hospice	6	Twyning Players	19
Guide Dogs	7	Carol Singers	19
Children in Need Skittles	8	Flowers in Twyning Church	20
Twyning Memories	9	Contact the Elderly, Tewkesbury	21
Tennis Club	10	TRAC – Bank Holiday	22–23
Children's Society Christingle	11	2nd Twyning Scouts	24
Bridge Club	11	Explorer Scouts	25
Foil Recycling	12	Twyning Tots	26
Crib Team	12	Twyning Playgroup	27
Community Events at the Fleet	13	Looking Back	28
Bus Timetable	13	French Group	29
Twyning School	15	Neighbourhood Watch	29
Twyning Chapel	16	Bulletin Schedule / Contacts	30

Keeping in Touch with Your Village

Twyning Parish Council Website

www.twyningvillage.co.uk

All sorts of useful information on the village and its amenities – everything from councillors to footpaths.

Facebook

Twyning Community on Facebook is a great way to keep in touch with up-to-date information on events, get advice or share any security concerns.

Twyning Bulletin

Published three times a year by the Parish Council, and delivered to your door.

Village Noticeboards

The Parish Council has noticeboards outside the shop, at the bottom of Lynworth Lane, at TRAC, at Stratford Bridge and at Shuthonger. The Village Hall and church have their own too. There's also a noticeboard on the side of the school, and one in the shop which will display adverts for a small fee.

Event organisers are encouraged to use the boards to reach village residents who aren't on Facebook!

Parish Council

Twyning Parish Council meets on the second Monday of every month (excluding the August recess, and December when the meeting is on the second Wednesday) at Twyning Village Hall or occasionally at the Ann Townend Hall. Meetings commence at 7.30pm and members of the public are welcome to attend. Agendas are normally posted on Parish Council notice boards one week prior to the meeting. Minutes can be viewed on the village website and are also displayed at the Village Hall and on the notice board outside Twyning shop.

Quick Contacts

Parish Council Chairman: Denis Murray – 297493

Parish Council Vice-Chairman: Jeremy Horsfall – 275059

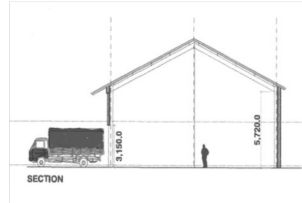
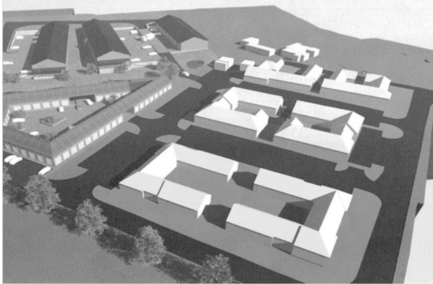
Tewkesbury Borough Councillor for Twyning: Terry Spencer – 292518

Gloucestershire County Councillor: Kevin Cromwell – 07860 230711

MP for Tewkesbury Constituency: Laurence Robertson – 291640

A full list of parish councillors, along with email contacts for local representatives, can be found on the Twyning Village website (see above).

THE NEW TWYNING? DO YOU WANT THIS?



Note the height of each of the units compared with a lorry/person

The developer who owns Brockeridge Park has submitted a Planning Application (18/0038/OUT) to build additional offices, industrial and warehouse/distribution buildings at the gateway of Twynning.

This development would bring little or no local employment to the village and would be a blight on our beautiful rural landscape. Noise and increased light pollution would be disturbing to residents and wildlife.

It would mean a dramatic increase in traffic entering and leaving the village including Heavy Goods Vehicles (HGV) and could cause a major hazard and traffic congestion at the M50 slip road access to the village.

What can you do about this?

You can still object by writing to the planning officer or registering online (Enter ref: 00368) (<http://publicaccess.tewkesbury.gov.uk/on-line-applications>)

We can also show Twynning's opposition to this application by:

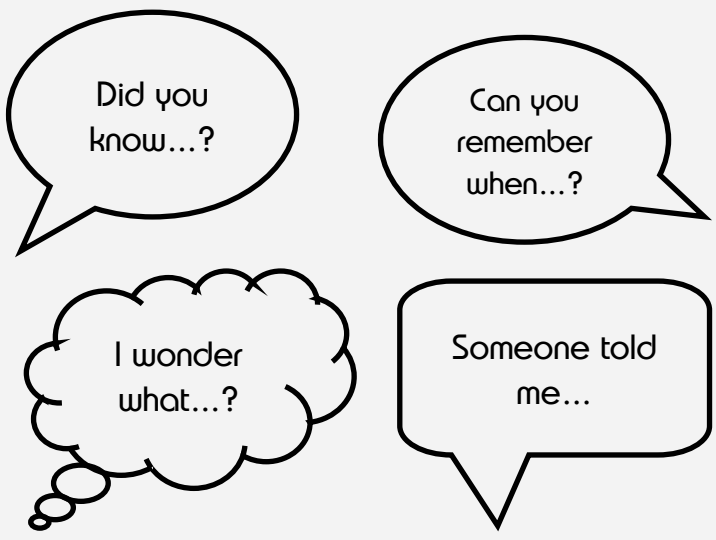
- Attending the Tewkesbury Borough Planning Meeting at the Council Offices on October 23rd at 10.00am. Members of the public can attend this Council meeting, but are not allowed to speak.
- Joining the protest group at the proposed development site on the day the Councillors visit the site (date and time to be confirmed).
- Highlighting the issue on social media.

We will keep villagers informed with more details of the date and time as they become available by:-

- Notices on the Parish Noticeboards
- Twynning Village Website (www.twynningvillage.co.uk)
- Twynning Community Facebook group

Please take action to save your beautiful village environment

Twynning Parish Council (clerk@twynningvillage.co.uk)



Did you know...?

Can you remember when...?

I wonder what...?

Someone told me...

Snippets of village history are always welcome for the Bulletin. Don't feel that you have to write anything regularly, or even write a lot. Even a sentence or two sharing memories of places as they used to be, anecdotes, 'did you knows' or stories of amusing incidents would all be very welcome. If you've lived in the village for a long time, we'd love to hear your memories. See p30 for editor's contact details.

Fundraising for Acorns Children's Hospice

We are slowly amassing a store of our knitted animals ready for next Easter. So far this year, 363 animals have been knitted, down on this time last year. We have lost more of our dedicated knitters due to age- and health-related problems, so if you can knit – or if you can help by sewing up the animals – please do get in touch. We can provide patterns and also wool if necessary.

We were fortunate this year to have so many chocolate eggs donated, which meant we could raise more money as we didn't have to purchase as many eggs.

If anyone is interested, Acorns do provide tours showing the work they do and the facilities available. This of course would have to be pre-arranged at a time and date suitable to Acorns. For more information on Acorns visit www.acorns.org.uk

Anita Haycock, 15 Paxhill Lane, 293890

Guide Dogs & Milk Bottle Tops!



It has been an eventful few months since my last Bulletin contribution. We were asked by Guide Dogs to board GDP Emily until she goes into training in October or November. So her training is now 'full on'. We have tried to introduce her to everything, including trains and the Metro at Birmingham Airport. She has lived with two young children for two months while our family stayed with us, has been introduced to Twyning's latest Guide Dog Puppy Kato and is now living with another dog, 19-month-old ex-Guide Dog Builder, who has returned to us as our own pet.

Builder was the Guide Dog puppy we had from 7 weeks old until he went into advance Guide Dog training. Unfortunately he was unable to complete his training as a Guide Dog as he was wearing his claws down on the hard pavements and making them bleed. Nothing was found that could be causing the problem so it was decided by Guide Dogs to retire him so that as a pet he would not be spending so much time walking on pavements. We were given first refusal to have him back and needless to say the answer was a resounding 'Yes'! Guide Dog puppy Emily and Builder get on really well – that is to say they did until Emily was spayed. Her having to wear a 'lampshade' hood made him frightened to go near her. Mind you, having been caught on the back of the legs by her hood I can see his point. Painful or what?

Thank you all for your support and collecting the bottle tops. If you see us out and about do stop and chat as it helps with Emily's training and of course Builder just loves the attention. Look out for Kato, a beautiful Golden Retriever/Labrador cross puppy who is just starting his Guide Dog training. He will be out walking around Twyning once he has had all his vaccinations.

Wishing you a good Christmas and a Happy New Year to you all.

Brenda Mead, 297540

Puppy Walkers Wanted!

If any of you are interested in becoming a Guide Dog Puppy Walker (First Year Guide Dog Puppy Trainer) there is a shortage of Puppy Walkers in the Gloucestershire area and Guide Dogs for the Blind are looking for new volunteers.

Twyning Children in Need Skittles

Last year we raised over £700. Can we do better this year?



This year's event will take place on Saturday 10th November at the Village Inn. So far the following sessions have been booked:

10am	Twyning W.I.	11am	Twyning Church
12 noon	Twyning Tennis Club	1pm	Twyning Chapel
2pm	Twyning Bridge Club	3pm	Twyning Playgroup
4pm	*available*	5pm	Twyning Beavers
6pm	Twyning Cubs	7pm	Twyning Scouts
8pm	Twyning Explorers	9pm//10pm	*available*

The cost of the event remains the same at £2 per person per session. All proceeds go to Children in Need. Please come along and support this worthy cause.

At the moment you will notice that three sessions are not booked, so if you would like to book a session let me know. You don't have to belong to a group – just come along with some friends and have fun. If skittles isn't for you, don't worry – come along and buy a raffle ticket or a cake or just make a donation!

If you have any queries about this event or would like to help in any way, please contact Jo Davies on 01684 296237.

Twyning Memories by 'A Villager'

Part 2 – Cottages, castles and a queen

Following on from my last Twyning old-time history, I will now talk about our southern border, which starts just below The Pastures – a very large meadow starting at Bow Bridge – and follows the River Severn until it reaches almost to the Mythe Hill.

The village border nearest Tewkesbury can be reached via the lane signposted Owls End. There used to be a cottage on the riverbank there that was occupied by the Raggatt family – it used to flood in the winter and the family very often had to move to their 'summer' cottage which was higher, and away from the flood plain. The cottages were known as 'Upper' and 'Lower' Cottages.

Also in this area were the old clay pits, owned by the Pool family, from which the clay was shipped out by river. Today the pits form a large lake.

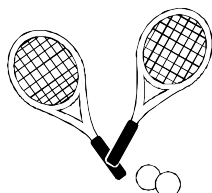
Going on up the river you will see the railway tunnel and old track bed. The railway ran from Tewkesbury to Malvern. On the other side of the river and going down a lane by the Mythe Garden Centre is a nature reserve. Also down this lane is the Mythe Castle where it is reputed Margaret of Anjou (queen from 1430–1482 by marriage to Henry VI) stayed during the Battle of Tewkesbury in 1471. She is believed to have watched the battle from the Mythe Tute. Not many people know about the Mythe Tute, an 11th-century motte and bailey castle. If you want to find out more, there are details, and many photographs by Phillip Halling, on the internet.

At the top of the Mythe Hill you will see the water tower, sold by the water board and now a private house. The water pressure in Twyning has been low ever since! The Mythe Hill has been known and used since Stone Age times, and ancient Britons used to collect woad from the hill to dye their bodies blue.

The border goes through Prichers Farm, from where milk was delivered prior to the Second World War. The southern border ends at a large meadow called Cowham, on the Passeys' farm. The family farmed there until the 1960s, and Miss Passey was a teacher at Twyning School.

To be continued...

Twyning Tennis Club



The Club has enjoyed another exciting season. This summer we entered three ladies' teams into the Gloucestershire league and one men's team. The men swept all before them, coming top of their division for the second season running, securing maximum points from their matches and also securing promotion to division 4.

The ladies A and B teams both came third in their respective divisions, thus both narrowly missing out on promotion. But they more than held their own and some good tennis was played. These two teams are building some strong foundations to push on next season. Equally, the C team did extremely well for their first season in the league, laying down some good foundations and experience. Generally, everybody's tennis is improving with the opportunity to play in the league.

We have also had a successful open day and welcomed new members into the Club. Our coaching programme with Malvern Tennis Academy continues on a Monday evening, as does a Friday morning one-hour session with Simon Filiatrault. Social tennis continues on Tuesday and Thursday evenings as well as Sunday morning.

Now we look forward to the winter league and for the first time are entering three teams. Tennis is growing in Twyning!

If you would like further details about any aspect of Club tennis, for experienced players or beginners, please contact Hilary or Peter.

On November 17th in the village hall we will be holding our presentation of trophies evening, and will be combining this with an auction of promises and a cheese and wine. Tickets will be on sale for friends and family. All welcome.

Hilary Davies, 01684 299350; Peter Gold, 01684 292586

The Children's Society – Christingle Service

This year's Christingle service will be held on **24th December 2018 at 5.00pm** at Saint Mary Magdalene Church.

Your support at the service will enable The Children's Society to continue their work with children who face life's harshest challenges. The service held in Twynning is very popular and has become a tradition amongst many families. It is truly a lovely service and a great way to start celebrating Christmas, so if you haven't been before please come along and join us.

Lorna Herold, 294292

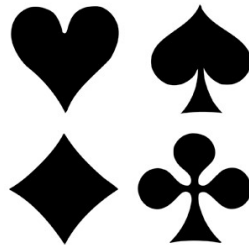
Twynning Bridge Club

We held our Seventeenth Annual General Meeting in May and all the officers and Committee were duly re-elected *en masse* as no other member of the club came forward to offer their services. The Chairman presented the cups to the winners of the competitions. These were:

Tuesday night Pairs: Ed Evans and Geoff Carter; Thursday Pairs: Junie Arnold and Irene Fort; teams on Tuesday: Jim Spence, Joyce Westwood, Pam Turner, and Geoff Carter; teams on Thursday: Carl & Liz Johnson, Cynthia Peck and Jim Spence; Individual: Liz Wall. We shall be taking our usual weekend bridge holiday in the autumn and this year it will be in Rutland.

We hold our duplicate bridge sessions in The Ann Townend Hall, Church End and bridge starts at 7 p.m. If you would like to join us and need a partner please call either Sandie Kilner on 01684 592601 or Irene Fort on 01386 553605. You will be most welcome.

Irene Fort – Secretary



Foil Recycling



There is a foil recycling container outside the village shop. Your foil, if recycled, could become another shiny aluminium product within just a couple of weeks. Please make sure that the foil is free from any food residue: the quickest way to do this is to give the foil a quick wipe or a rinse in your washing up bowl. Every aluminium drinks can and piece of clean foil can be recycled by the Oakley Day Centre and recyclers will be sure they are supporting a very worthy cause. Carolyn O'Neill, assistant manager at the Oakley Centre, said: 'In just over a year we have

recycled over 2.7 tonnes of cans and 1.9 tonnes of foil.'

The Oakley Recycling Project helps adults with learning disabilities to work with local businesses, schools and clubs to collect and process aluminium foil and other metal packaging to raise funds for the Centre. The foil recycling banks are emptied regularly by the group, who then sort and compact the aluminium before it is sold for recycling. The money raised from the sale of alucans and foil is used to improve the Service Users working environment. All money earned through the recycling project goes back into the Service Users Amenity Fund.

The project's activities also have environmental benefits: aluminium foil is endlessly recyclable and recycling uses only 5% of the energy it takes to produce foil from raw materials.

Crib Team

Calling all crib players – your team at the Village Inn needs you!

We are a mixed group of people aged between 28 and 75 who play for the Village Inn against a variety of teams (home and away) on a Monday night.

If you enjoy a game of cards and would either like to learn, or know how to play, and would like to join us, please get in contact. We would love to see you.

Contact Graham Wills on 07860 449979 or let Gary know at the VI.

Community Events at The Fleet

Tuesday is our charity coffee, tea, cake and chat morning.

All are welcome. We have a lovely mix of people coming each week from 10am-12pm and each month we raise money for a different charity. If you love making cakes we are happy to have donations of them on a Tuesday morning. It's a great way to meet new people, make new friends and have something to do on a Tuesday morning. It's my favourite morning of the week!

Book swap now happens at the Fleet.

Please do pop in to have a look – take one with you, drop some off or drop a donation in our charity box.

On the last Thursday of every month we are now doing a craft evening from 8pm.

Bring a craft along if you are currently doing one – even if you are not doing anything but would like to start and have no idea how or where to start, do come along. We hope to learn from each other or invite people to join us and show us. Another great way to meet people!

Shopper Bus Service 481

****MONDAYS ONLY****

Outward Journey

10.10 am	Twyning Green Shop
10.14 am	Shuthonger, Crown Inn
10.18 am	Tewkesbury High Street, Boots
10.20 am	Tewkesbury Crescent
10.35 am	Kingsditch Retail Park
10.45 am	Royal Well Bus Station Cheltenham

Return Journey

13.30 pm	Royal Well Bus Station Cheltenham
13.37 pm	Kingsditch Retail Park
13.52 pm	Tewkesbury Crescent
13.54 pm	Tewkesbury High Street, Anchor Inn
13.58 pm	Shuthonger, Crown Inn
14.04 pm	Twyning Green Shop

A copy timetable is on the Twyning notice board, outside the school. Full timetables are available from the tourist information office in Tewkesbury.

Twyning Parish Community Minibus

Available for community groups, not for profit and charities—local runs and organised trips



To book this Minibus, please contact Paul on 07957 116735 or email minibus@twyningvillage.co.uk

Call Paul on 07957 116735 to arrange your booking, or look on www.twyningvillage.co.uk for more details

- Disabled access
- 16 Seater
- Air conditioning
- Reversing Camera
- Tow bar
- Competitive Rates
- Seat belts
- Drivers available
- Side door & Step



HALFORDS TRADITIONAL AWARD WINNING BUTCHERS

Serving Tewkesbury for 10 years

**Open Mon - Fri 8am - 5.15pm
Saturday 8am - 4pm**






Halfords Traditional Butchers offer meats sourced and produced as locally as possible

- Gloucester Old Spot Pork Stockist
- British and Free Range Products
- Homemade Award-Winning Produce including Sausages, Faggots, Home Cured Bacon
- Homemade Gravy and Pork Pies
- Exotics Range and Seasonal Game also available



01684 299933 • info@halfordsbutchers.co.uk

www.halfordsbutchers.co.uk

45 High Street, Tewkesbury, GL20 5BH



Twyning School

In last week of the summer term the School Inspector arrived! As I write the inspection report by Ofsted is still embargoed but when you read this article it will be public knowledge. And I am delighted to say it is a very satisfying result. Twyning School has retained its 'Good' classification. In a world of superlatives, this may not sound much! But in the world of school inspection an Ofsted inspection 'Good' means what it says. There is little shading in the grading. A school is either excellent, good, in need of improvement or under special measures. It's harder every time to be 'Good' in the eyes of Ofsted. The one-day inspection we were given does not even allow for an excellent result. Our short inspection was determined by the fact that the inspectorate anticipated that we might do well but they could have reduced our rating if the inspection revealed failings. I think you have to be an educationalist to understand the system but I can assure you that our small village school has done well and outperformed many of our larger neighbours. These quotes from the report speak for themselves:

Pupils make good progress across the curriculum and attain well at the end of key stage 2. They are confident, articulate and well prepared to move on to secondary school ... A new behaviour policy ... gives pupils consistent recognition for their positive attitudes. Pupils behave well in lessons and around the school.

Pupils' progress in mathematics has been around the national average consistently in recent years. You are ambitious to improve pupils' progress ... so it matches the above-average progress pupils made in writing last year.

Pupils describe ... staff as caring and approachable. They know they can speak to their teachers if they are concerned about their welfare. You have established an open culture at the school that promotes safeguarding effectively.

As one parent noted: 'Twyning is a very caring and community-based school, where it is clear the children come first in decisions made and the school supports them in every aspect of their personal and academic development.'

The headteacher and all the staff deserve our thanks and admiration for all the hard work they have put in to gain this rating. I would also like to pay tribute to the governors, who have worked with the staff to ensure that our school provides a good all-round education. Like all good review processes the inspection report gives us some pointers as to where we can build on our current success. At the beginning of this school year the governors will work with the staff to set this year's objectives. Whilst we are buoyed by our Ofsted we will not sit on our laurels!

Ron Hesketh – Chair of Governors

Twyning Chapel & Twyning Parish Church

Twyning Chapel

Here we are at the end of the summer, and what a summer it has been. It was a great opportunity to share the service in the marquee on the Green over the Bank Holiday weekend with our friends from St Mary Magdalene and despite the torrential rain, there was a great turnout. We were sorry to be saying goodbye to Barbara Mesham but we wish her all the best in her retirement and would like to thank her for her enthusiasm over the years she has been in Twyning.

We would love to welcome you to our small, friendly chapel – either to one of our **Sunday services** which start **at 10.30am** and are fairly informal with music provided by piano, guitar and drums – or some of our other activities. As we don't have a full-time minister, our speakers come from far and wide and these include representatives from the various missions and organisations we support as a chapel.

We share in the communion service on the first Sunday of the month.

We will be holding our Harvest Thanksgiving Service on Sunday 23rd September and this service will be taken by a representative from Gloucester City Mission. Our Harvest Display will be made up of dried goods which can be used by them to meet the needs of people living on the streets in Gloucester.

Our other regular activities are as follows and we welcome anyone to these:

Dinkies – for preschool children and their parents/carers – held on alternate Friday mornings 10.00–11.30am, with activities, toys and refreshments. First session will be 14th September.

Bible Study and prayer meeting – held on 2nd and 4th Wednesday of the month – at chapel at 7.30pm

Home Group – other Wednesdays at 7.30pm – held at people's homes

If you have any questions or would like to know more, please contact Tom Brown on 01684 276578, Clive Porter on 01386 750400 or David Kendrick on 01684 438261

The Parish Church of St Mary Magdalene

The **regular services** each month in Church are:-

On the first Sunday of each month **Parish Communion** is at 9.30am with a **Sunday Club** for children of all ages.

On the second and fourth Sundays **Parish Communion** is at 9.30am.

On the third Sunday **Morning Praise** is at 9.30am – a non-communion service for all the family with tea/coffee and biscuits served from 10.40am and a stall selling goods to support Acorns Children's Hospice.

On the fifth Sunday in a month **Holy Communion** is at 9.30am from the Book of Common Prayer.

Each Thursday **Morning Prayer** is said at 9.00am.

Other dates to note are:

Oct	7th	Sun	9.30am/ 12 noon	Harvest Festival Bring & share lunch	Church/ Ann Townend Hall
Oct	19th	Fri	7.30pm	Abbey 20/21: Canon Paul Williams on celebrations to mark the 900th anniversary of the Abbey	Ann Townend Hall
Nov	4th	Sun	9.30am	Service to commemorate All Souls	Church
Nov	11th	Sun	9.30am 10.45am	Parish Communion Remembrance Day Service	Church War Memorial
Nov	17th	Sat	11am- 2pm	Annual Church Sale	Village Hall
Dec	15th	Sat	4pm	Carols for the Village	Village Hall
Dec	23rd	Sun	9.30am	Family Carol Service	Church
Dec	24th	Mon	5pm	Christingle Service	Church
Dec	24th	Mon	11.30pm	Midnight Mass	Church
Dec	25th	Tues	9.30am	Christmas Day Family Communion	Church

For more information on any of these or other events, please give the Churchwardens a ring or look at:-

www.achurchnearyou.com/twyning-st-marry-magdalene

Everyone is always welcome at all our services and events.

Ven. Ron Hesketh, 01684 299773; mobile 077 11 09 69 21

Parish Lay Minister, Angela Cole, 01684 294 325

Churchwardens, Chris Cole, 01684 294 325 , Margaret Bailey, 01684 298 268

Twyning and Probus

A significant part of the membership of Longdon District Probus Club lives in Twyning and Hill End. Recently, as part of its programme of social events, the Club organised two outings for members and guests. The first was to the Gloucestershire & Warwickshire Steam Railway, based at Toddington, and the second to the Helicopter Museum near Weston-Super-Mare.



The first outing was blessed with good weather and started at Toddington, where members enjoyed an optional cooked breakfast at the Flag and Whistle Café. Following the mandatory photo-shoot, the party then boarded a train to travel over the picturesque and recently opened section of line to Broadway. This train was steam-hauled by 35006, a beautifully presented Merchant Navy Class locomotive. Many members of the group then walked the short distance from the station into Broadway, making the most of the sunshine to enjoy a stroll around the village. For the return trip, some alighted at Toddington but others chose to complete the round trip via Cheltenham Racecourse.

The second outing, to the Helicopter Museum, took place during the early part of September. After light refreshment, the party was divided into two groups and given a very informative guided tour. After a break for lunch, members were free to enjoy the museum at their leisure, expressing surprise at how many machines are housed under what is basically one roof.

Longdon District Probus Club meets on most Monday mornings at the Hunters Inn, Buckbury (together with social events and occasional trips out, such as the two above) and talks on a variety of topics are planned to take place throughout the year. If you would like to join the Club, or perhaps come along as a guest, please contact the Club in the first instance at longdonprobus@gmail.com or the Secretary, Graham, on 01684 594931.

Twyning Players

"It's behind you!"

Yes, nearly that time of year – again. The festive season is fast approaching and Twyning Players are hard at work on this year's extravaganza and all-time family entertainment:



All your favourite characters with possibly some new ones, as well as Ugly Sisters like you've never seen before!

A little bit earlier this year – performances will be at Twyning Village Hall at 7.30pm on **Thursday 29th November, Friday 30th November and Saturday 1st December**, with a matinee performance on Saturday afternoon. Tickets will be available from the Village Shop and the Village Inn. Look out for posters nearer the time and tickets do sell quickly so book early to avoid disappointment.



See you there!

Carol Chapman, Secretary, Twyning Players, 293527



Twyning Carol Singers

We look forward to the Christmas season when we shall sing carols to parts of the village and raise funds to support local charities. Our license allows us to sing between 13th and 23rd December and we will once again be joined by Twyning Scouts, on Thursday 20th. If you would welcome a call do contact me in advance.

Rehearsals for special carols on private engagements will be in church at 7.30pm on Sundays 9th and 16th December; for traditional carols around the village turn up on the night, warmly dressed and bring a torch. Words are provided and itineraries will be on the village notice boards indicating assembly points. The chosen charities will be announced by the carol singers at the first rehearsal.

This is a community effort, so please, do come and join us. Any offers of hospitality will be accepted, and the presentation of charity cheques will be on Saturday January 19th at 7.30pm in Ann Townend Hall. Bring & share supper and £1 to defray costs. Do come!

Beryl Chescoe, 295352

Flowers in Twyning Church



At the beginning of September, Twyning Church played host to a lovely community event, when local individuals and groups contributed flower displays based on the theme of children's books. The displays not only highlighted the considerable flower-arranging skills of the contributors, but also their imaginations when it came to interpreting the titles chosen. There was incredible attention to detail in all of the displays too: see below for example – note the broken chair, baby bear's nappy and Goldilocks' shoes by the bed! See back cover for some more photographs.



Goldilocks and the Three Bears (display by Sue Harbottle)

Contact the Elderly, Tewkesbury

Over 1 million people living in the UK are socially isolated. They have little or no contact with either family or friends, and their numbers are rising. In our rapidly ageing population it is predicted that 2.2 million over 65s will be isolated by 2021.

Contact the Elderly is working to change this. In July this year, three Tewkesbury ladies launched the Tewkesbury group. 'We will help isolated elderly people, by replicating, as near as possible, the hospitality they would receive if they had friends or family nearby,' said Charlotte Shepherd.



Each older person is collected from their home by a volunteer driver and taken to a volunteer host's home for the afternoon. The group is warmly welcomed by a different host each month, but the drivers remain the same which means that over the months and years, acquaintances turn into friends and loneliness is replaced by companionship.

Contact the Elderly tea parties are a real lifeline of friendship for our older guests who have little or no contact with family or friends. They bring people of all ages together, develop fulfilling friendships and support networks, and give everyone involved something to look forward to each month.

The groups operate at weekends, when most community services for older people are not available. Moreover, Sunday has been highlighted to us by our older guests as being a particularly lonely day of the week. The groups are kept purposely small, and they meet in the welcoming environment of someone's home.

If **you are** interested in joining a group, or you would like to refer an older person to us, then please get in touch. Call **0800 716 543** between Monday to Friday 9am - 5:30pm or look on our website for more details: www.contact-the-elderly.org.uk



Contact the Elderly volunteers:
Sarah Dorkings, Charlotte Shepherd and
Sue McFeely

TRAC: Bank Holiday Weekend

The Bank Holiday weekend got off to a great start on Saturday evening with the return of the Barn Dance. The atmosphere in the marquee was fantastic and, with encouragement from the entertaining Caller, virtually everyone joined in! There were quite a few new faces to the village who came along but the evening acted as the perfect ice breaker and new friendships were soon made. *It is a shame that there are so many other events on elsewhere over the bank holiday weekend as it would be great if more people in the village came along. Fingers crossed we might see you all next year!*

Unfortunately on Sunday morning the heavens opened, but still many braved the good old British weather to attend the joint service between The Chapel and Saint Mary Magdalene Church in the marquee. Sadly, though, the classic cars stayed away. No matter how much planning is put into organising an event there is nothing we can do about the weather and by 11.30am, the Motor Show was abandoned and Andy and Will's Bacon Bap Shack closed up early.

Thankfully things brightened up for Bank Holiday Monday with the first car booters arriving just after 10am (only 3 hours early!). The barbecue and the refreshments were a sell-out and the bar was well supported. The whole event had a lovely feel to it and everywhere you looked there were smiling faces, as people tried their hand at the various stalls on offer or looked for a bargain on the car boot.

As added attractions this year we had a miniature traction engine and horse-drawn carriage rides, both of which proved very popular. In the arena we were entertained by local group Bucket List, who very kindly stepped in at the last minute. We also had our traditional Egg Throwing and Tug of War competitions.



The raffle was also a great success and a huge thank you is due to the Tennis Club for organising the ticket sales and prizes.

In the marquee, whilst Cathy Evans and her team served endless cups of tea and cream teas, visitors took time to take a look at the competition entries on display. It was lovely to see a lot more entries this year. The 'Great Twyning Bake Off' was very popular, as was the Photography class and the entries for this year's Flower Arranging, set and judged by local florist Hans Haverkamp, were stunning! The name going back on the trophy this year is Alison Peake's. Congratulations to everyone who entered any of the categories and thanks to all the judges.

Well done also to everyone who entered our Scarecrow competition. We had 9 entries this year with the theme being Pop Idol the Scarecrow. The time and effort that all the entrants had put into their scarecrows was amazing. Special mention must go to the Westwood family for their amazing David Bowie! They were joint winners alongside the Wilkes family with their Scarecrow of Michael Jackson.

On occasions like these it is always difficult to thank everyone who helped make the whole weekend a success, but if you did help in any way, large or small, THANK YOU! With just a couple of invoices still outstanding, figures indicate that **we have raised a fantastic £4,300 this year!** Every penny that TRAC makes is used directly on enhancing the area at Kilmore Lane. There are not many play areas in the area that are run by a committee of volunteers, rather than the local councils, but TRAC is! We rely solely on membership fees, grants and fundraising events for our income.

If anyone would like to support us by becoming a member at TRAC the annual membership is just £12.50 for an adult and £5.00 for a child under 16. Further details can be found on our website www.tracsport.org.

Lorna, 294292



2nd Twyning Scout Group

The group continues to provide a range of varied, exciting and adventurous challenges to the young people of the village thanks to a dedicated and enthusiastic leader team. This term, in addition to the section specific activities, we will be participating in the annual village Remembrance Day parade and service, Children in Need skittles and Christmas Carol Service.

As a group we are always in need of new leaders and helpers – please get in touch with any of the leaders if you are interested in joining us.

Ian Palmer, theianpalmer@gmail.com, 296842

Beavers (ages 6 to 8) – Danielle Morley, daniellecmorley@aol.com, 302782

Beavers had a lot of fun during the summer term and partook in activities as wide ranging as the St George's Day parade at Tewkesbury Abbey, den making and fishing, a range of water activities at Croft Farm and our very first appearance in the Tewkesbury Medieval Parade (see below). We have an exciting Autumn term planned for the Beavers with an international theme.



Cubs (ages 8 to 10) – Julie Catchpole, jdcatchpole@yahoo.com, 299225

The Cub Section restarted in May and is gradually growing in numbers of Cubs attending and our range of activities as the new leader team get up to speed. The Cubs particularly enjoyed the end of term group evening where they took on a range of challenges with the Beavers and Scouts combined and finished with ice creams all round.

The new term is a busy one and the Cubs have already been canoeing and completed an adventure hike, and are looking forward to kite making and a range of activity and challenge badges as well as bonfire night, the remembrance parade and the skittles night.

Scouts (ages 10 to 14) – Lorna Herold, l.herold@btinternet.com, 294292

Once again the summer term was a busy one and we tried to spend as much of it outdoors as possible with activities such as building bivouacs, map reading and wide games. Towards the end of term the majority of the group attended our local camp, by kind permission of Liz and Bill O'Dell, where they took part in team-building activities, canoeing, rifle shooting and a very eventful game of rounders!

The older Scouts also completed their Expedition badge which involved canoeing, cycling and walking with an overnight stay. By completing this Challenge badge, two of the Scouts, Ella and Ellen, have now both completed their Chief Gold Scout Award, with five others close behind hoping to complete it this term. Well done everyone!

This term we are welcoming four new faces, taking our numbers to 33, and we already have others waiting to come. Although we are FULL, we are happy to add names to our waiting list, as things have a habit of changing unexpectedly. If you would like to add a name to the list please me know.

Explorer Scouts



Since the last bulletin, the Explorers have been busy preparing for their expeditions (mainly as part of the DofE/Chief Scout/Queen's Scout awards, but sometimes just for the fun and challenge). The main event was centred around our summer camp, based at Glasbury, on the River Wye. We had 3 (Bronze) teams of 5 exploring the Black Mountains and wild camping, 1 (Silver) team of 5 set off down the river for a 2-day practice expedition (followed by a 3-day assessed expedition a week later) and the final (Gold) team of 4 moved to Ironbridge to set off on a 4-day expedition exploring the River Severn. As part of the expedition section of DofE, participants complete a project during their journey. The Gold team created 'Tour' T shirts depicting all the things they saw and did on the three rivers during their practice and assessed expeditions. Luckily, the weather at the end of the expedition was better than the start! Back in Twynning, they gave a presentation to the County DofE Advisor.

As always, a big thank you to all the leaders and everyone else who supports us to make the adventure possible, and to the independent assessors for the different expeditions. **We have space available in Explorers**, so if you are aged between 13 ½ and 18, give us a call and join us for an evening to see what it is all about.

Dan Orchard, Explorer Scout Leader, 298788, dan@twynning.net

Twyning Tots

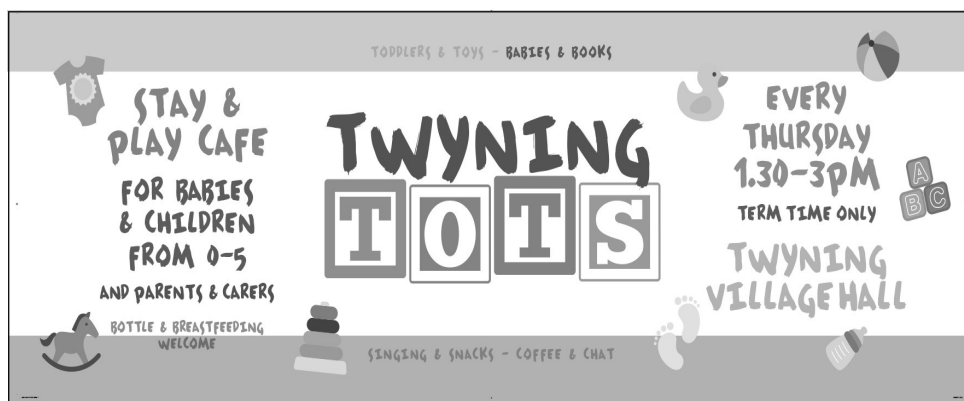
Twyning Tots is on every Thursday from 1.30pm–3.00pm at Twyning village hall – your first visit to us is free, then it's £1.50 per family from then on. Come and have a chat, something to eat and let the little ones play – we have a wonderful group who are all very friendly and love to see new faces.

This year we have said a goodbye to many of our regular faces who have now moved onto school! So we are looking for younger ones to come and join the fun. Each week we have great fun with Duplo, cars, a toy kitchen, trains, prams and a lovely safe baby corner. In the summer we love to play outside with our ride-on toys, water play and lots more. We love to do a craft each week: this year we have done many, from q-tip painting and hand prints, to decorating Easter bunnies, making fish pictures from cake cases and leaf printing.

If you have a little one age 0–5 do please come along. If anyone would like to pop in and help us set up or tidy up, make cakes for us or stay and make tea and coffee, please do get in touch either with Lizzie at the Fleet or via our Tots Facebook page. We look forward to another fab year!

Sponsored Toddle!

As part of a little fundraiser for Twyning Playgroup & Tots we have decided to get the little ones involved. Our aim is to walk the children and siblings down the river, and then back to have pitta pizza and juice at the end from the Fleet. There'll be a little game of spotting animals, plants and boats on the way too. We ask for the children to be sponsored to do this as it's a big ask for little legs! We will be doing this on Sunday the 7th of October at 3.00pm, meeting at the Fleet. Support and sponsorship are welcome!



Twyning Playgroup

Playgroup this year is going from strength to strength. Hayley, the staff, committee and children have had a wonderful year. Numbers are high, partly due to more people moving into the area. We are getting regular enquiries and are unable to accommodate everyone so please do get in touch even if your child is under 2 so we can make sure they go onto the waiting list. With the help of the Village Hall we have now increased to a full school day on a Tuesday for our 3-year-olds.

This year the children have done lots of fun and exciting things together including watching nature, activities with pebbles, pine cones and sea shells, pepper poppy art, singing songs, taking walks, eating Chinese food for new year, playing ball games, enjoying trips to the climbing wall and animal park plus much more!

We said a goodbye to a large group of pre-schoolers back in July for school this September and have now welcomed many new starters. Hayley has brought to Playgroup the Forest School idea that she has worked so hard to push forward with – taking on the course to enhance and add to the opportunities and educational development of the children. Some of this she has done in her own time, once again showing her 'above and beyond' commitment to Playgroup. We are now looking into putting more of our staff onto this course and the children have loved doing Forest School with the help of Twyning Park.

We have had a very good year from increased numbers, donations and of course a brilliant fundraising year, so a big thanks to all that have made this happen. We are currently looking into the best ways to invest this back into Playgroup. One of the main objectives this year was to investigate the viability of a new building for Playgroup so we are no longer 'pop up and down'. Although this journey has a while to go, we have moved far along and are currently working with others to try and make this happen, and look forward to progressing this over the next year.

Joint chair Lotte, Lizzie and playgroup leader Hayley and the staff thank the Village Hall for their continued support.



Looking Back



Top: Twyning Fleet

Bottom: Twyning Green

Thanks to Beryl Chescoe for these lovely pictures. (Dates unknown.)

French Group

French group continues on a Wednesday evening, usually the first Wednesday of the month, but I've had to make a few date changes this term. If you are thinking of coming along please check the date first.

We enjoy a range of conversations over a glass of wine or a cuppa, and usually cover some interesting and unexpected vocabulary. Anyone with any level of French is welcome, the atmosphere is very informal and fun.

For more details, give me a call:

Hilary Davies, 299350

Neighbourhood Watch

My name is Julie Irwin and I am your local Neighbourhood Watch coordinator.

Due to data protection it has been decided that the easiest way to broadcast relevant information is via the Twyning Community Facebook page. (There are more members than the Neighbourhood Watch group and it is also easier to quickly update members as I can upload via a mobile phone.)

I am aware that not everyone utilises this resource, so if you have a neighbour who doesn't use the internet please pass on any current information.

To ensure we continue to monitor and create a safe environment for all,

please report any suspicious activity by using the police non-emergency number: 101.

We have been fortunate that Twyning continues to be a safe place to live, and I am pleased that very few issues have been reported in the last few months. Thank you for your support. Any queries please contact me via Facebook Messenger.

Wanted!

Submissions of articles and photographs relating to Twyning are always welcome for the Bulletin. If you run a club or stage an event in the area let us know!

If you'd like to advertise in the Bulletin please contact the editor (see below for contact details).

Deadlines for the year's Bulletins are:

15th January

15th May

15th September

If you'd like to be added to the email contact list for reminders, please let the editor know.

Back cover: Flower Festival, Twyning Church (photos by Arthur Storey and Fiona Thornton)

Top: *The Very Hungry Caterpillar* – Twyning Chapel: Hanneke Monks, Margaret Porter and Jean Kendrick

Middle: *Treasure Island* – Twyning Players: Carol Buckland

Tom's Midnight Garden – Dorothy Williams and Barbara Rickett

Bottom: *Room on the Broom* (detail) – Twyning Village Hall: Charlotte Shepherd, Jane Bowers and Lizzie Cunningham

Alice in Wonderland (detail) – Twyning WI: Allison Peake and Adrienne Bennett

Twyning Bulletin is edited and designed by Fiona Thornton:
editor@twyningvillage.co.uk; tel. 294632

Distribution organised by Mary Heeks: 01 684 293566

Published by Twyning Parish Council. Printed by CLK Media Limited.

Webmaster: Bill O'Dell wro@idspartners.co.uk

Deadline for the next Bulletin is 15th January

Dates, information and prices quoted are believed to be correct at the time of going to press but are subject to change and no responsibility is accepted for any errors or omissions. Twyning Parish Council does not accept responsibility for any material submitted, whether photographic or otherwise. All material is sent at the owners risk and whilst every care is taken, Twyning Parish Council will not accept liability for loss or damage. The Bulletin or Twyning Parish Council does not endorse any products or services advertised and will not accept any advertising that implies or expresses the Bulletin's or Twyning Parish Council endorsement of a product or service.

V-HUB

VW, AUDI, SEAT & SKODA SERVICE AND SALES SPECIALIST

OVER 30 QUALITY VW GROUP
VEHICLES IN STOCK

SERVICE CENTRE FOR
SERVICE AND REPAIRS

COURTESY CARS



Telephone:

01684
214444



Unit 8a | Beta Close | Tewkesbury | Gloucestershire | GL20 8SR

www.v-hub.co.uk www.v-hubservices.co.uk

Find us on



