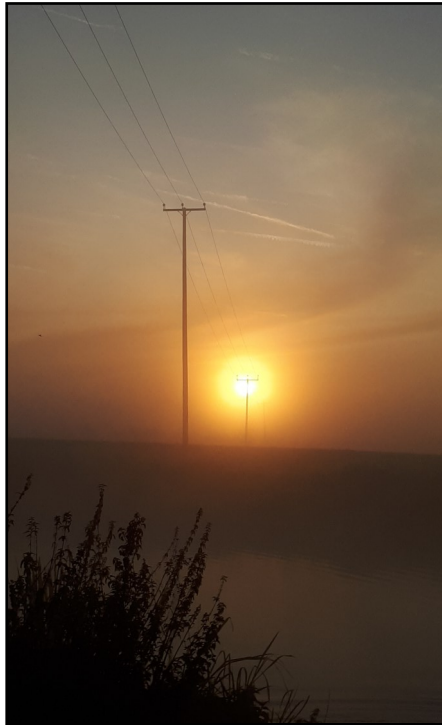


Twynning Bulletin



The Newsletter of Twynning Parish Council

No. 139, February 2020



Above: Twyning sunrise (Photo by Karen Buckley)

Twyning sunset (Photo by Fiona Thornton)

Front cover: Flooding at Twyning (Photo by Dave Lockett)

Editor's Introduction

Welcome to the spring edition of the Twyning Bulletin. Well, 'spring' may be slightly optimistic at this point, although shoots are starting to appear!

It's always good to see a variety of articles in the Bulletin, and as well as regular reports from village organisations, this time round you can read about hedgehogs and footpaths, and also find out about a local charity that you may not have heard of (that dates back to 1662!). There's also more fascinating village history, good news about the use of the community minibus and an announcement about the first village film night – and more! Read on...

Fiona Thornton, editor

(see p30 for contact details)

Contents

Keeping in Touch / Contacts	4	Tennis Club	18
Chairman's Report	5	Hedgehogs	19
Severn Trent letter	6	Bus Timetable	20
Twyning WI	7	Netball	21
Village Hall	8	Beekeeping	21
Friendship Group	9	Twyning Parish Church	22
Village Website /Events	9	Twyning Chapel	23
TRAC	10	Longdon District Probus Club	24
Twyning Players	12	French Group	24
Film Night	13	Twyning School	25
Children's Society	14	Twyning Memories	26
Acorns Children's Hospice	14	Twyning Relief in Need	27
Twyning Minibus	15	Avonside Footpath	27
Short Mat Bowls	16	2nd Twyning Scouts	28
Over-60s Lunch Club	16	Explorer Scouts	29
Footpaths	17	Bulletin Schedule / Contacts	30
Guide Dogs	18		

Keeping in Touch with Your Village

Twyning Village Website

www.twyningvillage.co.uk

All sorts of useful information on the village and its amenities – everything from councillors to footpaths.

Facebook

Twyning Community on Facebook is a great way to keep in touch with up-to-date information on events, get advice or share any security concerns. There are other village pages for selling, for photos and for many of the village organisations.

Twyning Bulletin

Published three times a year by the Parish Council, and delivered to your door.

Village Noticeboards

The Parish Council has noticeboards outside the shop, at Lynworth Lane, TRAC, Hillend, Church End, Stratford Bridge and Shuthonger. The Village Hall and church have their own too. There's also a noticeboard on the side of the school, and one in the shop which will display adverts for a small fee. **Event organisers are encouraged to use the boards to reach village residents who aren't on Facebook!**

Parish Council

Twyning Parish Council meets on the second Monday of every month (excluding the August recess, and December when the meeting is on the second Wednesday) at Twyning Village Hall or occasionally at the Ann Townend Hall. Meetings commence at 7.30pm and members of the public are welcome to attend. Agendas are normally posted on Parish Council notice boards one week prior to the meeting. Minutes can be viewed on the village website and are also displayed at the Village Hall and on the notice board outside Twyning shop.

Quick Contacts

Parish Council Chairman: Jeremy Horsfall – 275059;

cllr.horsfall@twyningcouncil.co.uk

Parish Council Vice-Chairman: Peter Hadley – 07950 046951

Tewkesbury Borough Councillors for Twyning: Mike Sztymiak 01684 299743,
Philip Workman 07885 931772

Gloucestershire County Councillor: Kevin Cromwell – 07860 230711

MP for Tewkesbury Constituency: Laurence Robertson – 291640

A full list of parish councillors, along with email contacts for local representatives, can be found on the Twyning Village website (see above).

Chairman's Report

Welcome all to the new decade. Following the departure of Michelle English to Northern Australia, we welcome our new Clerk, Gill Jennings, and look forward to her experienced guidance and support in the future.

On the planning front, the Parish Council opposed the application to build about 50 homes on a site off Church End Road opposite Cherry Orchard Lane and this was refused by Tewkesbury Borough Planning Committee, supporting our Neighbourhood Development Plan. The applicant does have a right of appeal, so watch this space.

As most of you will know, the sewer at the Village Green end of Goodiers Lane overflows on a regular basis and since December 2013 more than 180 email messages have been sent to Severn Trent drawing their attention to the problem. In spite of attempts to solve the problem it continues. On 30th September 2019 a letter of formal complaint was sent to the Chief Executive of Severn Trent. We have just received a response, a copy of which is included in this Bulletin (see overleaf).

I regret to report that we have not been able to finalise matters with Persimmon relating to the car parking spaces or the gate at Brockeridge Paddocks. We have been awaiting draft documentation from their Legal Department and in spite of numerous reminders we hear nothing. Unfortunately, we also have not, at the time of writing this report, resolved matters relating to Kilmore Field, but I am fairly confident that progress will be made shortly.

Your Council has set the Budget for next year at £24,685, an increase on last year, but the good news for Council Tax payers is that the precept will remain at £22,950 – the balance of £1,735 will be taken from our reserves. The amount of Council Tax required by the County Council and Borough Council has not yet been set.

The Parish Council website is being updated and I would like to take this opportunity, on behalf of Twyning Community, to thank all those concerned in supporting the old website and the creation of the new one: Mike Rushby, Bill O'Dell and Richard Jacques.

The August Bank Holiday Fete was a great success, thanks to the excellent planning and the dedication of those helping on the day, mainly members of TRAC (Lorna Herold's team). Unfortunately damage by vandalism has taken place at the Children's Play Area and TRAC site to the value of about £ 2,500, half the profit from the fete.

We have just received notice that the Planning Application for Outline Planning Permission for 52 units to the North of Fleet Lane has been validated and no doubt will come before Tewkesbury Borough Planning Committee in the coming months.

Jeremy Horsfall, Chairman, Twyning Parish Council

16 January 2020

Dear Cllr Horsfall,

Severn Trent would like to issue the following statement with the intention that it is communicated to the Parish Council and the wider community. We understand the frustration and disappointment of the Parish Council and local community at the lack of resolution of the sewer flooding issue in Twynning. We hope this statement provides a transparent explanation of our current and previous position.

Severn Trent agree a total available funding for sewer flooding mitigation projects every five years based on consultation with customers and subject to approval by OFWAT. As we have limited funding for each five year period we must prioritise which flooding locations to address.

The prioritisation and funding allocation for specific projects takes account of location, impact, frequency and number of affected properties to ensure that we resolve the most severe flooding issues first. Severn Trent aims to resolve as many sewer flooding locations as possible within each five year period. Sometimes a project may not proceed if the cost of the solution is greater than the estimated benefit, or if a project is lower priority compared to all other projects within the five year funding cycle. In these instances Severn Trent will look to provide low cost mitigation measures, such as the non-return valves, which we have installed at some properties on Fleet Road. We also continue to record flooding incidents and to re-assess project funding allocation and prioritisation on a periodic basis.

Twynning sewer flooding project commenced in December 2013. The initial assessment determined that the project was lower priority relative to other flooding projects. This is because highway flooding is a lower priority than other forms of flooding, such as internal property flooding, as determined through customer consultation. Consequently, we have been unable to progress and build a solution for Twynning.

As Severn Trent has recently agreed funding for the next five year period with OFWAT we are currently re-assessing prioritisation and funding for previously identified flooding locations including Twynning and we are aiming to provide a fully costed solution for approval in July 2020. If approved, the project will enter the design phase lasting usually 8 to 12 months and will then be submitted for final approval for construction. This is subject to change if higher priority projects are identified in our overall flooding programme of work. We will ensure that the Parish Council are made aware of any approvals and changes to timescales.

Please also be aware that at present the estimated solution cost exceeds the funding allocation, and therefore Severn Trent cannot guarantee that we will be able to fund a solution. Though this may change as the solution is further developed, we wanted to be open about our current position. Our engineer will be exploring every option to try and find a viable solution.

Severn Trent would like to highlight that the Parish Council has been instrumental in helping us understand the flooding issues. The upset and distress caused by flooding, which has been effectively communicated by the Parish Council, is a significant consideration in funding allocation and prioritisation for our projects. Mr Luckett's assistance, on behalf of the Parish Council, has expedited our investigations and is much appreciated.

We also understand that there has been a frustration with Severn Trent's lack of opposition to development in the Twynning area. Whilst this is understandable, Severn Trent are unable to deny a connection to our sewer system as developers have a right to connect under the Water Industry Act 1991.

Finally, we would like to clarify that the decision not to build a solution is not an indication that Severn Trent believes the flooding issue is negligible or unimportant; it is an indication of what our customers have determined we should invest our money in. Whilst we would like to be able to resolve every flooding location, it is important that we use our customer's money in the most effective way to benefit as many customers as possible. Whether we ultimately build a solution or not, we can promise a responsive and prompt clean up service whenever it is required.

Yours Sincerely,



Rebecca Sweeney

Design Manager
Capital Delivery & Commercial
Waste Infrastructure - Worcestershire & Gloucestershire

Letter from Severn Trent to Chairman, Twynning Parish Council

Twyning WI

Another four months have flown by and 2020 sees us into a new membership year. For £43 the ladies of Twyning WI enjoy monthly meetings with interesting speakers; craft workshops; trips to the theatre; Reading, Scrabble and Make & Bake groups as well as a host of County and National events we can go to if we want to.



In September Matt Johnson came to talk to us about his career change from policeman to author. Having suffered PTSD from tragic events he witnessed, he found a new outlet in writing and his books have now become best sellers. Many of us bought his book and have gone on to read all three!

A last-minute change of speaker in October brought us an interesting talk by local helicopter pilot Mark Knight, about the aviation charity fly2help, which is dedicated to raising the spirits of people, young and old, living in difficult personal situations and inspiring young people as they consider their futures. Founded by pilots, their Air Smiles Days and Aim High education programme take everything that is exhilarating about flying and use it to do something extraordinary.

We held our AGM in November and I've never been to such a quick one! Not wanting to waste time on the boring stuff, our President, Ann, whizzed through the business so that we could get on with more intellectual matters – a quiz about Locations in Gloucestershire run by Angela Panrucker. We didn't realise we knew so little about our County, and came away with many places on our 'to visit' list.

In November we held an Indian Block Printing workshop making Christmas cards, designing tea towels and decorating linen shopping bags. An amazing selection of items left the room that day and everyone was pleased with their projects.

December saw us getting our sparkly jumpers out early for our Christmas meal. With the table laid and candles glittering in the baubles we enjoyed a lovely two-course meal and then some 'Guess The Carol' singing accompanied by Margaret on the piano. If I say so myself, we make a lovely choir!

So if any of that sounds like your cup of tea why not come and join us for a cup of tea and a chat at our next meeting. The 2020 calendar has some intriguing titles on it: you never know what to expect but it always ends up being worth going to! We meet on the second Tuesday of the month from 7.30pm till 9.30pm in the Village Hall. Check out what we are up to by searching for Twyning WI on Facebook, or contact Alison on 01684 296924 . We'd love to meet you!

Twyning Village Hall

The Village Hall Chairman would like to thank everyone who helped run the Village Hall stall at the bank holiday fete and all those who took part in the competition and signed up for membership of the Lottery.

VILLAGE HALL EXPENDITURE 2019

A programme of improvements to the fabric and facilities in the Village Hall has been carried out during 2019. This is a summary of expenditure.

As a result of the two new developments in the Parish, the Village Hall allocation of S106 money was £9846. This money could only be spent on capital expenditure and the following items have been supplied.

Replacement Radiators	£1789
Projector & Screen	£2722
Dishwasher	£2247
New gates	£2950
TOTAL	£9708

This expenditure was approved by Tewkesbury Borough Council and channelled through the Parish Council account in order that the VAT could be recovered.

In addition, Village Hall funds were used to complete the following:

Redecoration	£2360
Electrical surveys and installations	£2616
TOTAL	£4976

Additional expenditure was provided from Village Hall funds to complete annual inspections and servicing which included: the roof-mounted solar panels; fire equipment check & renewal; boiler service. The undermentioned services were supplied to the Village Hall free of charge:

Fire Inspection and report: Gary Packer @ Corinium Fire Safety Consultancy Ltd
Roof check & tile replacement: S J Lewis & Sons

A Village Hall booking calendar is now available on the new Village Website. It will indicate when the hall is busy in order that private functions can be planned and booked. As usual, book via: bookings@twyningvillagehall.org.uk

A vacancy exists for a Trustee to join the Village Hall Management Committee. Anyone who may be interested in helping run the Village Hall is requested to contact either Dave Lockett or Christine Skelton on 297565 or 297493 respectively.

D J Lockett, Chairman

Twyning Friendship Group

The Friendship Group meets on alternate Fridays in Twyning Chapel at 10.30am. The group was initiated by Jim East to help people who have lost their loved ones. Originally called the Bereavement Group, we have changed the name as we realise this may give the impression that we only talk of sad times, and this is not the case. Admittedly we have all lost our partners – some recently, some years ago – and we have couples who have found love again and remarried, so please don't think we sit there talking of bereavement – we don't!

We meet to enjoy a coffee and biscuits and have a chat with friends, talk about old times, share our family news, and generally put the world to rights. We arrange lunches and outings to places of interest, such as arboretums, museums and historical houses.

We had a great meal at The Fleet for our Christmas Lunch, where the staff looked after us extremely well with lovely food and then had fun giving Secret Santa Gifts, ably distributed by Freda (see photo).

We would welcome anyone who would like to join us. Please contact Jim East, 01684 295224 or Hilary Caudle 01684 293860 / 07770 571755 or hilary@owlsend.co.uk.



Village Website / Events

www.twyningvillage.co.uk has had a significant re-vamp in the last few months: it is much easier to find your way around and offers more and greater facilities than before. We can now display Events on a simple-to-use calendar that prior to this required a degree in computer sciences to maintain! If you look at the month of December there was plenty going on and lots of information to pass on. January is looking a little thin, mostly because there have not been the events to publicise.

We'd like to find some volunteers who are in the thick of village activities to keep the Events diary up to date.

Facebook is a great place to put up all sorts of messages, but the Community page has grown now to nearly 1200 members and therefore a post gets buried in no time. We have a good start for the coming year already, but there is a lot more going on than you imagine. Come and help a great team to make this a go-to calendar for Twyning! Please email hello@twyningvillage.co.uk; Delta Ferguson and Bill O'Dell are putting all this together and will appreciate your help.

TRAC

The TRAC Committee has had a difficult and frustrating past 12 months. It started full of positivity when we heard that we had been successful with our 106 bid and we were really excited and enthusiastic to commence and complete the projects that we had planned. We resurfaced the courts, refurbished the playground, we started developing the Top Site... but then everything came to a standstill!

Obviously we have been subjected to some horrific weather recently, which has prevented us from permitting access until the grass is well and truly established, but we are also having to wait until the Parish Council and the village Playgroup come to a decision with regard to the future of the Playgroup. So the plans we had to develop a bike track, install outdoor gym equipment, to start up a village football club and provide a small running track, at the request of the village school, are currently on hold and the facility is not being used as we would have hoped. The TPC also plan to put a path at the side of the site from Brockeridge Paddocks and a gateway through the hedge. We are hopeful though that a resolution, albeit temporary, can be found where TRAC and the PC can work together to get the site up and running, whilst discussions between the PC and Playgroup continue.

On the main TRAC site we also have exciting plans to extend the current changing room facilities and to install an outside toilet for general purpose use.

TRAC is run by a committee of volunteers trying to provide a facility that the community can be proud of, but we all lead busy lives and our time is limited.

When TRAC was granted use of the site there were restrictions put in place by Tewkesbury Borough Council. One of these restrictions was the opening hours, which many of you may not even realise exist (they can be found on the sign as you enter the site). Outside of these hours the site has to be locked. This is also a condition set down by our insurance. Another restriction was that NO DOGS are allowed on site, which extends to Kilmore Field. As a committee of volunteers, we have to ensure that these restrictions are adhered to in order to ensure we are not in breach of the Terms and Conditions of our lease. We hope that you will work with us in these matters.

Opening times are:

8.00am–9.30pm (or dusk) Monday–Friday

9.00–9.30pm (or dusk) Saturdays

10.00–8.30pm (or dusk) Sundays and Bank Holidays

The other stumbling block that we are facing is: how to manage the usage of the courts?

Following the work being completed on resurfacing the courts we were given maintenance guidelines that we must follow, to ensure that we do not jeopardise

the longevity of the work carried out. One is that BIKES OR SCOOTERS ARE NOT ALLOWED ON THE COURTS. Sadly, despite asking children not to take their bikes onto the courts, a few continued to do so and the courts have had to remain locked... Although this hasn't stopped some individuals who somehow gained knowledge of the lock codes and were seen on CCTV taking their bikes and scooters onto the courts! We are trying to find a solution that we can afford to maintain but it is not easy. We even put a plea out to villagers to help with a rota system, to oversee the correct usage of the courts, but unfortunately the response was not sufficient to sustain.

TRAC is one of the few village sports facilities in the area not funded by the local council, so we have to raise all the funds ourselves and these funds come from membership fees, court hire, grants and fundraising events. If the PC were more readily prepared to assist us financially, we may not need to enforce that users of the courts are members but, as membership fees are currently one of our main sources of income, we have no alternative.

We need to work together as a community to ensure that the facilities on offer are well maintained and used and we hope that you will openly support us with this. Although our play area is open to the general public and does not require membership, we would welcome regular users to become members too, in order to help us raise funds needed to maintain the site. Most of the upkeep in the play area is due to wear and tear but recently we have experienced vandalism, which although witnessed, no name has been given. Sadly, the young lad in question allegedly was seen repeatedly kicking the bridge / ladder on the climbing frame until it broke, which is now costing £2400 to replace! We are trying to claim through our insurance but naturally this is going to have a knock-on effect on our premium.

Membership is just £12.50 a year for an adult or £5 for a child 12 years and under. Full information is on the website: tracsports.org or call Hilary on 01684 293860.

OFFER... For those signing up to be a member in 2020 we are offering in return FREE use of the courts. All members will be given the gate access code, which will be changed regularly, and then they can use the courts freely (Booking Hire and Tennis Club commitments will take priority). If we fail to get enough people to support us this year, we will need to request that the PC increases the village precept to cover the costs of the site – YOUR SUPPORT IS NEEDED NOW!

Lastly, if anyone has any future concerns regarding TRAC **please contact one of the committee directly rather than using the village Facebook page to raise your issues**. Hopefully we can then resolve them swiftly and clarify why certain decisions are being made. People are often quick to criticise but don't fully understand what goes on behind the scenes. If you would like to join us, to find out more, why not join the committee and help with the future developments of the site.

Lorna Herold, Chair TRAC: tracsports.org, l.herold@btinternet.com

Twyning Players

We've recovered now from last December's panto: Robin Hood. This production benefited from having two producers – long-standing members Hazel Smith and Georgina Thwaites. Getting a show like this on the road, with so many people involved, is quite a challenge and they did a fabulous job.

Feedback from the audience was that it was great fun, the right length, very professional and one of the best pantomime performances for a long time, appropriate for ages 8–80!

We were delighted to have support from young people backstage: Rose Essex and Lilia Morley with choreography and Leo Salisbury with sound. A first was having three generations of the Guilding family on stage: Nigel as Bess Before, Lisa as Robin Hood and Poppy as a Villager – brilliant!

Rehearsals are just starting for our next production which will be on **14th, 15th and 16th May**. Look out for posters nearer the time and tickets will be available from the Village Inn and the Village Shop – thanks to everyone there for their continued support.

New members are always welcome. If you would like to be involved, onstage or backstage, do talk to any Twyning Player or give me a call.

We look forward to seeing you in May!

Carol Chapman, Secretary, tel. 293527

Learn to Save a Life!!

Basic Life Saving Skills Training Courses, available in Tewkesbury



- CPR and Defibrillation
- Mental Health First Aid
- Fire Safety and Practical Fire Extinguisher
- Emergency First Aid at Work
- Emergency Paediatric First Aid

Many of our courses are suitable for all ages and all abilities



Contact us for more information

www.thedeveurexcentre.co.uk

T: 01684 214333

E: info@thedeveurexcentre.co.uk

We also rent out modern Consultation, Counselling, Conference and Meeting rooms.
If you are interested in using our facilities, please contact us.

FILM NIGHT AT TWYNING VILLAGE HALL



SAVE THE DATE –

FRIDAY 28TH FEBRUARY



Following on from the very positive feedback we received from Twynning Parishioners, the Village Hall Management Committee are excited to announce that we will be holding our very first film screening at the village hall on Friday 28th February at 7.30pm.

We will be announcing the film very soon both on Parish noticeboards and Facebook, when tickets will also be available to purchase.

Ticket price: £3.50

Bar and snacks!

For more information, please contact:

Charlotte: 07837 255958 or Sarah: 07881 346788

TODDLERS & TOYS - BABIES & BOOKS

STAY & PLAY CAFE
FOR BABIES & CHILDREN
FROM 0-5
AND PARENTS & CARERS

TWYNING TOTS

EVERY THURSDAY
1.30-3PM
TERM TIME ONLY

TWYNING VILLAGE HALL

BOTTLE & BREASTFEEDING WELCOME

SINGING & SNACKS - COFFEE & CHAT

The graphic features various icons: a teddy bear, a duck, a ball, a rocking horse, a stack of blocks, a footprint, and a bottle.

Children's Society

Many thanks to all who attended the Christingle service on Christmas Eve. With the help of the Church and your generous donations a fantastic £425 was raised for The Children's Society. Thank you!

The service is always a great way to start the festivities and give the children time to reflect on those less fortunate than themselves, and it has become a tradition with many families within the village to come along each year. The uniformed groups led the prayers and Rose Essex gave a very clear reading. Angela Cole (ably assisted by Ron Hesketh) kindly led the service and as always her talk got the children involved and caught their interest.

Thank you to everyone who helped in any way, big or small, with the preparations for the service and to everyone who came along. We look forward to seeing you all again next year.

Box Holders

The box-holder scheme is The Children's Society's biggest fundraiser and the money raised within the village last year went directly towards helping the children supported by the Society. March is rapidly approaching and boxes are due for emptying, so I will be in touch with box holders shortly to arrange collection. If anyone would like a box, please do not hesitate to contact me.

Lorna Herold, 294292

Acorns Children's Hospice

The knitted animals are well on their way and so far we have just over 1,000 in hand, slightly down on this time last year.

We need more knitters and stitchers-up of the animals. We also need more wool, so if you have any, do let us know. We can collect wool, and if it's not suitable for our use we can hand it on to the knitting group at the Roses Theatre on a Wednesday morning, who knit for us, but also for our men in the forces.

We hope to get an advertisement in February's *Tewkesbury Direct* asking for wool and hope that Louise from *Tewkesbury Cards and Gifts* will accept the donations.

The animals, complete with Cadbury's Creme Eggs, will be on sale from Saturday 15th February until Easter – Sunday 12th April.

We are off to a good start with £35 donated from sales of Christmas items sold by M&Co, Tewkesbury. We have a long way to go to reach the £3,000 raised last year, but with your help we'll have a jolly good try!

Sam & Anita, 15 Paxhill Lane, tel. 293890

Twyning Community Minibus

Thank you to those of you who responded to the minibus survey in our last bulletin. We had a good response to the survey, with 14 people expressing an interest for a weekly trip into Tewkesbury.

The minibus committee is a small team of village volunteers, so our fast task was to find additional people to help with the project. *We are now in need of volunteers to drive, and volunteers to be passenger assistants, in order to get this worthwhile cause up and running.*

We are looking to run a service every Friday and to combine the trip into town with luncheon club.

So residents from Twyning can shop in Tewkesbury, whilst Tewkesbury residents, formerly of the parish, can be brought back to the village and taken to Twyning luncheon club (and vice versa).

We have been very fortunate to have been given some financial support from our borough councillors, and this will be a great help to get the project started.

If you would like a seat on the service, or are able to volunteer in any capacity, please contact Nici Khor in the first instance on 07771 637711, 01684 299017, or twyningminibus@gmail.com. Thank you everyone!

Are you having a
**group outing, club day
out or special event?**

Why not use the Twyning
Community Minibus?

Our bus can seat up to 16 passengers and has wheelchair access.
£65 per day, £35 half day or £20 for under 2 hours.

Contact Nici Khor:
twyning.minibus@gmail.com / 07017 344688

COMMUNITY
Twyning MINIBUS



Twyning Short Mat Bowls Club

This club continues to thrive, using first-class equipment, every Monday afternoon throughout the year in the Village Hall. As well as enjoying the exercise and competition the members revel in the camaraderie of the weekly sessions.

If you are interested in joining the club contact Neil, 593429; Malcolm, 295512; Fred, 592175



Twyning Short Mat Bowls Club Members enjoy their pre-Christmas 3-course lunch at the Defford Arms, courtesy of Sunita and Wilson.

Twyning Over-60s Lunch Club

The Club meets at the Village Hall on Fridays, during term times. Lunches are served at 12.30pm, many members arriving early to have a chat. The excellent meals are prepared by four teams of cooks who work hard to provide the lunches and we thank them for giving up their time. We are a self-funding organisation run entirely by volunteers. We have welcomed several new members recently, but we have room for more. Why not come along and give us a try?

Our thanks go to Mrs Margaret Brown and her team for an excellent Christmas meal. Everyone enjoyed themselves. We had a raffle and sang carols: thanks to Mrs Margaret Dixon for playing the piano.

We would like to thank everyone for their continued support. However, as usual, we are still in need of people (male or female!) to step in occasionally when cooks and helpers are ill or on holiday. If

anyone has time free on a Friday, either early to help set up tables or between 10am and 2pm (not necessarily for the whole four hours) please let us know: Sam Haycock on 293890 or Judith Allen on 292123.



Footpaths and Public Rights of Way

As residents of Twyning we are very fortunate to have on our doorstep 19 miles of footpaths that we can use simply by walking out of our front door into the countryside. In less than an hour you can walk along the River Avon and be at Tewkesbury Cross.

My name is Bob Beetham and for the last four years I have been the Footpath Co-ordinator for all the Public Rights of way (PROWs) in the Parish including Church End, Shuthonger, Woodend, Brockridge, Hillend, Puckrup and Stratford Bridge. I am very fortunate to be supported by a small but dedicated band of people who volunteer their time to walk the PROWs in order to check their accessibility and that stiles and gates are in a fit condition. When any problems are reported I arrange that a group of us attend the area and if possible rectify the problem. The Public Rights of Way department of Gloucestershire County Council contacts me with information and requests, as does Twyning Parish Council.

All Public Rights of Way are owned by someone and are registered with Gloucestershire County Council. These PROWs can be either a footpath, normally only open to walkers, or bridleways, open to walkers, horses and cyclists. The landowner has a duty to keep these open and accessible. The same goes for stiles and gates that are erected over PROWs: these can only be erected with the permission of the local authority.

Here are a few of the frequently asked questions.

Who owns a gate or stile?

A stile or gate, although on a public right of way, is not a part of it. Such structures are for the advantage of the landowner, to permit enclosure of the land and to control movement of livestock, rather than for the benefit of the public.

Is there a minimum width of a footpath or bridleway?

A footpath has to be one metre wide and a bridleway two metres wide.

Are landowners allowed to plough over PROWs?

Landowners must ensure they restore the footpath or bridleway within 14 days of ploughing.

Are bulls allowed in a field with a PROW?

Dairy bulls over 10 months old are not allowed to cross over a field with a PROW.

Twyning Parish Council allowed funding to have the Twyning Parish Map updated/ reprinted and it is available to any resident that would like to have one. If you would like a free copy of the latest map, have a question relating to PROWs or would like to be on the list of footpath volunteers, would you please contact me on 01684 290711 or e-mail me on bobandjanisbee@hotmail.com.

Guide Dogs for the Blind

Happy New Year to you all. 2019 was a good year for our Guide Dog fund raising. We collected £430 over Easter and Christmas making knitted novelties and £102.50 from the Fleet Coffee Mornings. A grand total of 532.50. A big thank you to Shannon and the Staff at The Fleet for making us so welcome every Tuesday morning for our charity fundraising sessions, which have helped us support a different charity each month. Also thanks to Jo and Jane for their help with the knitting and supplying wool and chocolates, and Maggie Williams who donated a big box of Ferrero Rocher chocolates which fill the knitted Christmas puddings we sold at the Tewkesbury Garden Centre. We are very grateful to them for letting us display the puds, the sale of which raised a further £80.

The bottle tops are coming in thick and fast (red, green and blue plastic milk bottle tops only) and recycling them involves the lovely people at the Butterfly Garden, a project for people of all ages dealing with disablement of any kind, who give their time and effort to sifting out the rogue bottle tops from the good ones. Although the monetary value is low (£60 per ton) Guide Dogs for the Blind are grateful for any amount received as the organisation depends solely on charitable donations.

Thank you all for your help, be it in donations in the Shop and Village Inn Guide Dog collection boxes, collecting bottle tops or buying our knitted novelties. Guide Dogs for the Blind appreciate and are grateful for your support.

Brenda Mead – Puppy Walker (Guide Dog Puppy Trainer)/GD Boarder, 297540

Twyning Tennis Club

Members of Twyning Tennis Club are enjoying winter tennis as much as summer tennis. There are two teams braving all weathers in the Gloucestershire winter league. Other members are enjoying social sessions and coaching sessions at various times in the week, day and evening. All that's needed is warm clothing, hats, visors to keep the strong sun off, yes, and occasionally a waterproof!

But Spring is round the corner and for those who prefer a warmer time on the court it won't be long before that happens. The new season starts in April but new members can join now. There are offers on fees and opportunities to join for just one month as a trial run for £10. So why not take the plunge and come and have a go? Either get in touch or come down to the courts on a Tuesday or Thursday evening from 6pm. There is usually someone there who will encourage you to join in. Members not only enjoy their tennis, but also social occasions, such as quizzes, BBQs, beetle drives, and recently we held a very entertaining 'Race Night'.

For more details about membership and opportunities for children and adults contact Peter Gold on 292586 or Hilary Davies on 299350.

Hedgehogs in our Area



Most of us see more squashed hedgehogs than live ones. Their natural defence mechanism - rolling into a ball - is no protection against ROAD TRAFFIC. All nature-loving people want to do something about this carnage. So, do drive carefully, especially at night, do all you can to avoid hedgehogs that may be crossing the road and if it is safe to do so stop and assist hedgehogs to get across quickly.

By now everyone must be aware of the alarming decline in the hedgehog population. Since 1950 there has been a reduction of 97%. Hedgehogs have changed little over the last 15 million years. Like many of the first mammals, they have adapted to a nocturnal way of life. Larger species of hedgehogs can live 4-7 years in the wild and smaller species live 2-4 years.

How can we assist hedgehogs?

Slow down when driving at night.

If you have a garden make it a friendly place. Be sure that they can come and go, by cutting a hole in the fence. Provide food to supplement their natural diet of slugs, snails, beetles, worms, caterpillars; a dried cat food without fish is a suitable, but make sure cats don't eat it! Place it inside a box that has a small entry hole. Some cats can be ingenious so keep an eye out!

Always provide fresh water, NOT milk.

Leave a part of the garden wild with leaves and wood and maybe a safe wooden home where they can make a nest in the spring and a hibernaculum in the winter.

Pesticides are potentially dangerous to hedgehogs. Hedgehogs may eat slug pellets, and they are very likely to eat poisoned slugs and snails. Find alternatives like beer traps and copper rings to protect plants from slugs. If you get a healthy hedgehog population, you will notice significantly fewer slugs anyway.

Make sure they can get out of a pond if you have one by creating a shallow end.

Watch out while strimming and lighting bonfires.

Take ill or wounded animals to the local Wildlife Hospital. www.valewildlife.org.uk

Approach your local council and ask them to erect signs (see above) approved by the Department of Transport. They will help protect all small animals.



For further information please contact the British Hedgehog Preservation Society, Hedgehog House, Dhustone, Ludlow, Shropshire SY8 3PL. Tel: 01 584 89080, / e-mail: info@britishhedgehogs.org.uk / website: www.britishhedgehogs.org.uk

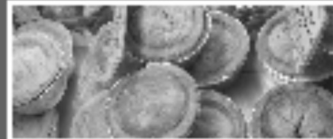
A version of this article has also been printed in the February 2020 edition of Tewkesbury and District U3A News



At Halfords Traditional Butchers,
we offer meats sourced and
produced as locally as possible



Open Monday - Friday 8.00am - 5.15pm
Saturday 8.00am - 4.00pm



Award Winning produce including our **GOLD** Award
home cured bacon, award winning sausages,
black pudding, sausage rolls and much more

* Homemade pork pies
and gravy pies, sausage
rolls, faggots and pasties
cooked daily

* Your stockist of British,
free range and local
produce including
Gloucester Old Spot Pork

* Seasonal game, exotics
range and frozen fish
selection also available
as well as much more at
your friendly local
traditional butchers.

* Special offers available in
store and bulk buy
offers. Now offering full
BBQ selection along with
our extensive range.

telephone: 01684 299 933

info@halfordsbutchers.co.uk www.halfordsbutchers.co.uk

45 High Street, Tewkesbury, Gloucestershire GL20 5BH

Shopper Bus Service 481

****MONDAYS ONLY****

Outward Journey

10.10 am Twyning Green Shop
10.14 am Shuthonger, Crown Inn
10.18 am Tewkesbury High Street, Boots
10.20 am Tewkesbury Crescent
10.35 am Kingsditch Retail Park
10.45 am Royal Well Bus Station Cheltenham

Return Journey

13.30 pm Royal Well Bus Station Cheltenham
13.37 pm Kingsditch Retail Park
13.52 pm Tewkesbury Crescent
13.54 pm Tewkesbury High Street, Anchor Inn
13.58 pm Shuthonger, Crown Inn
14.04 pm Twyning Green Shop

A copy timetable is on the Twyning notice board, outside the school. Full timetables are available from the tourist information office in Tewkesbury.

Netball

ANYONE FANCY A GAME OF NETBALL?

Enjoyed playing netball at school?
Stopped playing and would love to start again?
Well look no further!!!

Where: TRAC, Kilmore Lane, Twyning
Date: 1st MONDAY OF EACH MONTH (Starting 2nd MARCH)
Time: 8pm–9pm
Cost: £3.00 per session
Contact: Lorna 294292 for further details



Sessions will be **predominately match/game play** (depending on numbers) but basic skill development can be covered as needed.

Sessions open to anyone over the **age of 12 upwards**. Players of **ALL** abilities welcome. Even if you already play elsewhere, but fancy an extra run around, we would love to see you.

Beekeeping

Twyning has its own Beekeeping school and there are places for trainees in March and through the summer. There are 4 theory sessions starting Thurs 12th March and approx. 20 practical sessions held at Green Farm here in Twyning, starting in April.

Beekeeping is a fascinating hobby and a rewarding one when you start to harvest your honey crop. It is also a dying art, although the number of beekeepers is increasing gradually year on year – for perspective, there used to be 9 shops in Guildford that sold beekeeping supplies and there are now 9 in the UK. So skills are being lost, though bees account for one third of the fruit and veg you eat every day. Without them The Village Inn would have far less to put on your plate! And, in days gone by, put in your glass – honey was the sugar that the first brewers used.

So what can you do if beekeeping isn't for you? Plant bee-friendly plants like red clover, bee balm, foxglove, asters, sunflowers and goldenrod, and encourage your local farmer to stop using neonicotinoids as a pesticide – may bees are killed annually by this stuff. It disorientates them and they can't find their way home.

And buy local honey: not only is it good for hay-fever sufferers, but it keeps beekeepers happy and solvent!

For more information on bees, go to www.mubk.org.uk

Twyning Parish Church & Twyning Chapel

The Parish Church of St Mary Magdalene

Twyning Parish Church is just that. No prizes for being profound then! What I really want to say is that it exists for you, whether you come or not. If you look in any direction in this country, wherever you are, you will probably see a church tower or steeple. This is still a powerful symbol of inclusion. If you want some time to yourself... to think... to recharge... you will find our parish church open during daylight hours. Some may feel uncomfortable about approaching us about a baptism, marriage or other life events when they have rarely, if ever, been through the door. Please don't. We are there to be open, not to tie you to a pew!

We also exist to pray for everybody in our parish. If you or somebody you know would like to be in our prayers, please let us know or leave a name in Church. We will treat such a request with whatever discretion you want. Similarly, if you would like a pastoral visit please let us know. Conversations are different from formal counselling, but they can be equally positive. Ron Hesketh, Associate Priest

The **regular services** each month in Church are:

- On the 1st, 2nd & 4th Sunday of each month **Parish Communion** is at 9.30am.
- On the 3rd Sunday **Morning Praise** is at 9.30am – a non-communion service for all the family with tea/coffee and biscuits served from 10.40am and a stall selling goods to support Acorns Children's Hospice.
- On the 5th Sunday in a month (4 times a year) **Holy Communion** is at 9.30am from the Book of Common Prayer.
- Each Thursday **Morning Prayer** is said at 9.00am. From March 5th to April 2nd this will include a Lenten Reflection.

Other dates to note are:

Feb	26th	Weds	7.00pm	ASH WEDNESDAY SERVICE	in Church
Mar	22nd	Sunday	9.30am	MOTHERING SUNDAY	in Church
				FAMILY COMMUNION	
Apr	5th	Sunday	9.30am	PALM SUNDAY	in Church
				COMMUNION	with a donkey
Apr	9th	Thurs	7.00pm	MAUNDY THURSDAY	in Church
				COMMUNION	
Apr	10th	Fri	2.30pm	A SERVICE OF REFLECTION	in Church
				FOR GOOD FRIDAY	
Apr	12th	Sunday	9.30am	EASTER DAY COMMUNION	in Church

Everyone is always welcome, at all our services and events.

For more information, please give the Churchwardens a ring or look at:
www.achurchnearyou.com/twyning-st-mary-magdalene

Ven. Ron Hesketh, 01684 299 773; mobile 07745 758 899
Parish Lay Minister, Angela Cole, 01684 294 325
Churchwarden, Chris Cole, 01684 294 325
Churchwarden Emeritus, Margaret Bailey, 01684 298 268

Twyning Chapel

Well – here we are – another New Year and much to be thankful for over the past 12 months and looking forward to what 2020 will bring. It was great to see so many people from Twyning come to our Christmas services, in particular the carol service and our Christmas Day service. We finished the year with a café-style service of reflections and thoughts which was an opportunity to share with each other.

A few things coming up over the next few months include:

- Mother's Day café-style service on Sunday 22nd March at 10.30am – come a bit early and have coffee/tea and biscuits before the service starts and enjoy a more informal and slightly shorter service.
- Good Friday 10th April, 10-12pm – Coffee morning with hot cross buns and activities for the children
- Good Friday – 6pm service of readings and Easter music
- Easter Day, 12th April 10.30am – Easter celebration service

Our regular activities continue as follows:

Sunday Morning Worship – 10.30am. You would be very welcome to come and try us out – we are a friendly group and enjoy lively music and a variety of speakers.

Dinkies – fortnightly group on Friday mornings (usually advertised on the Twyning Facebook page) from 10–11.30am for all children from birth upwards. Lovely opportunity for children to play and parents/carers to meet up over a cuppa.

Bible Study and Home Groups – run on alternate Wednesday evenings at 7.30pm either at the chapel or in someone's home.

Friendship Group – meets on alternate Fridays at chapel at 10.30am – for coffee, chat and outings/lunch out at times.

For more information about us or any of our activities, please contact Tom Brown, 01684 276578; Clive Porter, 01386 750400 or David Kendrick, 01684 438261

Longdon District Probus Club

The last meeting of 2019 featured a slide show of Club events that took place during the year, followed by light refreshment that included Christmas cake, sherry and mince pies. All very sociable for both members and guests.

The new year of 2020 started well, with our first meeting featuring magician Dr Bob King, MMC, who provided a morning of education and entertainment for Club members. For the first part Bob described how he became involved in magic and then the history of conjuring and illusion, from the Pharaohs through Houdini and Paul Daniels to the present day. The second part of the morning was where Bob performed feats of illusion that astonished and baffled us all. Before the entertainment finished Bob demonstrated 'bubbles' and ended up by encasing our chairman completely in a bubble 'column'.

Longdon District Probus Club meets on most Monday mornings at the Hunters Inn, Buckbury (together with occasional trips out and social events) and talks on a wide variety of topics are planned to take place throughout the year (see Twynning School notice board). If you would like to join the Club, or perhaps come along as a guest, then please contact in the first instance our Secretary, John, at johnlridley@hotmail.com.



Left to right, the host for the day, John Westcott (our Club 'conjurer'), Dr King and Chairman Graham Francis.

French Group

The next meeting for French group will be on Wednesday March 4th at 7.30pm.

We have enjoyed some lively meetings this last year as we have been lucky enough to have the company of some young native French speakers. Hopefully this trend will continue this year.

So, if you feel like brushing up your holiday French and learning a bit more about France, do join us.

Ring Hilary on 299350.

Twyning School

The most significant news from our village school is that the Headteacher will be leaving us at the end of the Summer term. After 14 years at Twyning, Richard Vaughan is woven into the fabric of the school and the village. We shall be very sorry to see him go. I was about to say that he has done his time but that might be misconstrued! Nor is he retiring. For some time now, Richard has worked with the school inspectorate (better known as Ofsted) and also as a specialist in school improvement, and he moves on to develop these roles. In his time here many have benefited from this expertise and his experience of teaching in primary education. There will be time to celebrate his achievements and service later in the year and doubtless I will devote a column or two in the Summer edition of this Bulletin.

The governors are now engaged with representatives from the Local Authority in the process of seeking and appointing a new Headteacher. As I write the period for applications is closing and we hope to make an appointment early enough to ensure a smooth transition to the new appointee. Both staff and governors are committed to maintaining our high standard of education (at the top end of the 'Good' rating) and to the special atmosphere that we can enjoy in village school.

In our community there is concern about the ability of the school to meet rising numbers of school-age children. The governors are keeping a close eye on the school roll and have raised this with the Local Authority. Numbers are hard to predict given the uncertainty over levels of future housebuilding, but we know that our intake will be high for the next few years. We are actively looking at maximising our capacity and plan to offer places to as many local families as possible.

Last term saw the opening of a Secret Garden and enhanced playground facilities. We want to do more and suggestions from staff and governors include:

- improvement of the outdoor play area including:
refurbishment of parallel bars, football posts, the bridge and playground markings; additional items, e.g. playhouse, tepee, chess board; PlayPod
- new flooring in the reception area
- refurbishment/painting of the main corridor
- umbrellas and bases for use with tables in the garden at lunchtime
- canteen tables
- football pitch
- improvements to staff facilities
- rear access to the new outdoor classroom area

Obviously we will have to prioritise and can't achieve any of this without fundraising and sponsorship. If you think you can enhance our village school don't hesitate to contact the Headteacher or any of the governing body.

Ron Hesketh, Chair of Governors

Twyning Memories by 'A Villager'

Part 4 – Down to business!

I must now tell you a little more about Twyning businesses from 1910 until the 1960s.

Village shops

Roberts of Hillend Common was a purpose-built shop on the triangle, selling groceries, vegetables, paraffin and carbide etc. The front of the shop can still be seen. Dixes shop and beer house (called Dixieland by the locals) was situated at the pools, Hillend, and also sold groceries, tobacco, vegetables, paraffin etc. There were seats in a field at the rear of the property where lots of locals met on summer evenings. A dart board was placed in a lilac tree – hence it was known as The Lilac Lounge! Mrs Price's shop in Nut Orchard sold all groceries and was very popular with children for sweets, as they used to run up the alley from school. Miss Hudman ran the village shop, which sold groceries, tobacco, sweets etc. This was situated between the Village Inn and Green Terrace.

Coal merchants

Gosling's yard was situated opposite the present village shop and was later turned into a garage by Cecil and Harold Warner. Hallings Coal Merchants had a yard at the bottom of Twyning Green next to Green Terrace. They closed in the late 1960s.

Post offices

Twyning Post Office was next to the present village shop and was run by the Pates family, then taken over by the Phillips family in the 1930s in Lynworth Lane. It then passed to Harry West, ex-Village Inn landlord, until the 1970s. As well as the Twyning Post Office, there was one at Shuthonger, which was next but one to the Crown Inn and was run by the Price family for 30 years.

Shoe repairs

Harry Milton at Bockeridge had shoes dropped off by the Midland bus from Upton, Worcester and Tewkesbury. He also made shoes and army boots for the Wilder family from Twyning Manor. George Merrick of Lynworth Lane also made shoes for local people. He was disabled following injuries sustained in the First War. Mr Roberts from Shuthonger Common had a large repair shop across the common from the old pub. He was disabled following an injury playing cricket for Twyning.

Tailors and seamstresses

Ernest Foulkes was the village tailor, and ran his business from Green Terrace. He made men's suits and gentlemen's clothes. Mrs Hillier had a shop in Lynworth Lane making and altering clothes, mainly for ladies.

Next time – more local businesses...

Twyning Relief in Need Charity

In the past, various residents of Twyning gave money or gifts in kind to help support the poor and needy of the village. Various charities were formed, and Trustees appointed to administer the funds. Recipients often received their support in the form of coal being delivered.

One of the charities was the Edghock Charity, resulting from a will made in 1662 by Richard Edghock, a yeoman farmer, who lived at Fountain Farm (now known as The Fountain). In his will he left the house and farmland to his childless daughter and her husband. After her death the house and land was to be let, with half the income to go to the poor and needy of Twyning and half to the vicar. Trustees were appointed to administer the Trust, which continued to let the property until 1915. At that time, permission was given by the Charity Commissioners to sell the house and remaining land, and the proceeds were then invested.

During the 1970s it was decided to merge all the other charities with the Edghock share and so Twyning Relief in Need Charity was formed. The charity has an income of about £300 per annum.

The Trustees decided several years ago to support some of the organisations in the village. A donation is made each year to the school, the lunch club and scouting group. The money can help those who might otherwise not be able, for financial reasons, to take part in an organisation's activities. The Trust also makes grants to some individuals. Any parishioner can approach a Trustee and ask for help.

Trustees:

The Vicar of the Parish; Mr John Brookes; Mrs Monica Gray; Dr David Herold; Mrs Helen Randall; Mrs Sarah Palmer

Avonside Footpath

When we did our Neighbourhood Development Plan some years ago, an overwhelming number of residents wanted to see more open access to the river bank and the footpath along the Avon towards Tewkesbury.

Our Tewkesbury Borough Councillors, Mike Sztymiak and Philip Workman, have been working hard to obtain some funding to open up this footpath and we now have some starter funding to get a project under way. We have agreement and kind cooperation from a number of landowners. Derrick Ashdown has come up with a design for a new disabled- and pushchair-friendly gate which should make access to the riverside easier and safer for both pedestrian and animals. The plan is to repair the fences and replace the stiles over a period of months to open up the riverside for pushchairs and therefore families, and also for disabled access to the river. This is an exciting project that is seeing the light of day once more.

2nd Twyning Scout Group

2nd Twyning Scout Group – Ian Palmer - theianpalmer@gmail.com

The autumn term has been very busy and together with the regular annual community activities (Remembrance Parade, Children in Need skittles, Pantomime and Christingle) has meant that all sections have once again enjoyed a very full Scouting programme. Organisationally, Becci Smart has stepped down from the Cub section after helping to re-establish and run the pack for the last 18 months – thank you Becci. We are delighted that Steve Wilcox and Anna Rudgley will be joining us as new leaders in the Cub Section for the first term of 2020.

Beavers – Age 6 to 7 (Thursday) – Anne Green – thefamilygreens@btinternet.com

We started the autumn term canoeing on the Avon and getting wet! The rest of the term was working towards teamwork challenge. The older Beavers ran an evening of their favourite games and one evening Lorna told us about the Children's Society, when hopefully our Beavers realised how lucky they are. We were awarded a grant towards activities for healthy lifestyles and we used some of the funds to go to Gloucester climbing centre, where we had a fantastic evening. Eleven Beavers came on a sleepover at the village hall, where as well as the usual night hike, and campfire they earned their communicator badges. We ended the term walking around the village seeing the Christmas lights of Twyning. Owl's house was the definite winner.

Oscar, Amber and Ben were all awarded their Bronze Chief Scout award and have moved up to Cubs. We also say farewell to Woozle (Young Leader Ollie Meadows) as he turns 18. Please contact Anne Green if you have a child who would like to attend Beavers or you are an adult who would like to help on a regular basis. We are currently full and have a waiting list for children aged 4+.

Cubs – Age 8 to 10 (Thursday) – Julie Catchpole – jdcatchpole@yahoo.com

The autumn term was a busy one as we finished our World Challenge badge, started the Skills Challenge badge with a circus skills workshop, fitted in some pumpkin carving and went go-karting and crate stacking at an indoor weekend camp. Sincere thanks to Becci and her husband Duncan for their help with this. Cubs and parents enjoyed the charity skittles night, Remembrance Parade and Christingle service, not forgetting the Christmas disco party. This term was the last one for Becci Smart, our Deputy Leader. After supporting the pack since its start-up, she will be much missed and we are very grateful for her contribution.

The new year brings us two new leaders in Steve Wilcox, who is currently training to be a uniformed leader, and Anna Rudgley as an assistant leader, which will help us to cater for the growing pack as we receive more new Cubs from Beavers. Our assistant Kate Masters will now be helping fortnightly along with Anna. The support from our volunteers, parents and young leaders is vital – thank you!

Scouts – Age 10½ to 14 (Thursday) – Lorna Herold – l.herold@btinternet.com

As well as our regular weekly meetings we managed to pack a lot of extra things into last term, including a narrow boat weekend, a camp fire with the Cubs and an evening of Tubing at Gloucester Ski Slope. We rounded off the term by joining Twyning Carol Singers in the village. Also last term, 6 of the Scouts took part in a District Shooting Competition. 19 Scouts from the District took part, with Leo Salisbury and Tom Westwood finishing in the top 4 and therefore qualifying for the County Shooting Competition in February. All 6 will also go forward to a competition later in the year. Many thanks to Dan Orchard for support with this. Sadly last term, as some Scouts' commitments changed and others moved onto Explorers, our section numbers dropped dramatically down to 20! **This has therefore left us with some spaces.** We feel passionately that Scouting provides valuable opportunities and challenges, so if anyone wishes to join our troop please do get in touch. We try to provide a full and varied programme, and we also ask the Scouts what they would like to do, although I have had to say NO to bungee jumping! This term we will be concentrating on ensuring that our senior Scouts complete their Chief Gold Scout Awards and that our younger Scouts continue to work towards their Challenge Awards. We are also hoping to have a camp. As always we are looking for adult volunteers to join in and support us. If anyone feels that they would like to join our team please do get in touch.

Explorer Scouts

Since the last bulletin, the team who were thwarted by the weather have now completed their canoe expedition and all Explorers have delivered presentations on their experiences to parents and guests. One of our special guests during the term was Oliver Dibbens from Duke of Edinburgh Award HQ, Windsor. I was very proud of how our Explorer team conducted themselves at the National Scout Rifle Championships. All were very keen to do regular training and compete again this year. In the District shooting competition, 4 of our Explorers came top and will go forward to represent Tewkesbury at County level. We have also been invited to represent Gloucestershire at the South West competition. The varied programme has included climbing/abseiling on Cleeve Hill and at indoor centres, foraging for edible plants, cooking, Parliament nights (debating), practice for the Cotswold Marathon event and taking part in the Scouting 'Million Hands' project – helping refugees in our local area. At the time of writing, we are preparing for our Dartmoor activity weekend, involving 38 young people, including some Scouts who will be ready to move up to Explorers this year. The main purpose of the weekend is to have fun and to learn navigation and other expedition skills. As always, a big thank you to all the leaders and everyone else who supports us. We are fairly full, but if you are aged between 13 ½ and 18 and interested in joining Explorers, give us a call and join us for an evening to see what it is all about. Dan Orchard, Explorer Scout Leader, 01684 298788, dan@twyning.net

Bulletin admin

Submissions of articles and photographs relating to Twyning are always welcome for the Bulletin. If you run a club or stage an event in the area let us know! You don't have to be part of a club or organisation to contribute, though – the Bulletin is truly a community effort for everyone to share in.

If you'd like to advertise in the Bulletin please contact the editor (see below for contact details).

Deadlines for the year's Bulletins are:

15th January

15th May

15th September

If you'd like to be added to the email contact list for reminders, please let the editor know.

Back cover: Two beautiful atmospheric photographs of our village.

Top: Karen Buckley

Bottom: Roy Thomas

Twyning Bulletin is edited and designed by Fiona Thornton:

editor@twyningvillage.co.uk; tel. 294632

Distribution organised by Mary Heeks: 01 684 293566

Published by Twyning Parish Council. Printed by CLK Media Limited.

Webmaster: Bill O'Dell wro@idspartners.co.uk

Dates, information and prices quoted are believed to be correct at the time of going to press but are subject to change and no responsibility is accepted for any errors or omissions. Twyning Parish Council does not accept responsibility for any material submitted, whether photographic or otherwise. All material is sent at the owners risk and whilst every care is taken, Twyning Parish Council will not accept liability for loss or damage. The Bulletin or Twyning Parish Council does not endorse any products or services advertised and will not accept any advertising that implies or expresses the Bulletin's or Twyning Parish Council endorsement of a product or service.

V-HUB

VW, AUDI, SEAT & SKODA SERVICE AND SALES SPECIALIST

OVER 30 QUALITY VW GROUP
VEHICLES IN STOCK

SERVICE CENTRE FOR
SERVICE AND REPAIRS

COURTESY CARS



Telephone:
**01684
214444**



Unit 8a | Beta Close | Tewkesbury | Gloucestershire | GL20 8SR

www.v-hub.co.uk www.v-hubservices.co.uk

Find us on



