


Twyning Bulletin



*The Newsletter of Twyning Parish Council
No. 140, June 2020*




We're just a phone call away

 **Help Team**

01452 422660

Information and guidance about a range of issues for older people and those around them. How to access support if you have recently left hospital

 **Friendship Line**

0800 2980579

A Free phone line for older people who would like a listening ear and a friendly chat

Both lines are open 9am-4pm, Monday to Friday

Helping you connect with others



Connect with your neighbourhood and create some real community spirit. Printable posters and details about how to get involved available at: ageuk.org.uk/gloucestershire

#GreetYourStreet



Gloucestershire Springboard is a Facebook Group where you can meet friends, join in activities and have fun.

Search: [facebook.com/groups/gloucestershirespringboard](https://www.facebook.com/groups/gloucestershirespringboard)

For more information visit www.ageuk.org.uk/gloucestershire



Age UK Gloucestershire registered charity number 1111772

Front cover: Mary Magdalene Church at sunrise (Photo by Suzi Lacey)

Editor's Introduction

Welcome to the summer edition of the Twyning Bulletin. To be honest, I wasn't certain how many submissions we'd have under the current circumstances, but although we inevitably have fewer club and activity reports, I'm delighted that we've been able to bring you a full-size Bulletin, with the usual mix of news, village history, photographs – and even a quiz!

Special thanks to our volunteer distributors, who always do a great job, and whose help is particularly appreciated at this time.

Fiona Thornton, editor

(see p30 for contact details)

Contents

Keeping in Touch / Contacts	4	Twyning School	18
Chairman's Report	5	TRAC	19
Public Rights of Way	6	Longdon District Probus Club	20
Tree Warden	6	Twyning Playgroup	21
Emergency Committee	7	Twyning Parish Church	22
Twyning WI	8	Twyning Chapel	23
August Bank Holiday Weekend	10	Village Hall	23
Tennis Club	12	Freecycle Saturday	24
Children's Society	12	Twyning Memories – A Response	26
Over-60s Lunch Club	13	2nd Twyning Scouts	28
Guide Dogs	14	Explorer Scouts	29
Acorns Children's Hospice	15	Bulletin Schedule / Contacts	30
Twyning Players / Quiz	16		

Keeping in Touch with Your Village

Twyning Village Website

www.twyningvillage.co.uk

All sorts of useful information on the village and its amenities – everything from councillors to footpaths.

Facebook

Twyning Community on Facebook is a great way to keep in touch with up-to-date information on events, get advice or share any security concerns. There are other village pages for selling, for photos and for many of the village organisations.

Twyning Bulletin

Published three times a year by the Parish Council, and delivered to your door.

Village Noticeboards

The Parish Council has noticeboards outside the shop, at Lynworth Lane, TRAC, Hillend, Church End, Stratford Bridge and Shuthonger. The Village Hall and church have their own too. There's also a noticeboard on the side of the school, and one in the shop which will display adverts for a small fee. **Event organisers are encouraged to use the boards to reach village residents who aren't on Facebook!**

Parish Council

Twyning Parish Council meets on the second Monday of every month (excluding the August recess, and December when the meeting is on the second Wednesday) at Twyning Village Hall or occasionally at the Ann Townend Hall. Meetings commence at 7.30pm and members of the public are welcome to attend. Agendas are normally posted on Parish Council notice boards one week prior to the meeting. Minutes can be viewed on the village website and are also displayed at the Village Hall and on the notice board outside Twyning shop.

Quick Contacts

Parish Council Chairman: Jeremy Horsfall – 275059;

cllr.horsfall@twyningcouncil.co.uk

Parish Council Vice-Chairman: Peter Hadley – 07950 046951

Tewkesbury Borough Councillors for Twyning: Mike Sztymiak 01684 299743,
Philip Workman 07885 931772

Gloucestershire County Councillor: Kevin Cromwell – 07860 230711

MP for Tewkesbury Constituency: Laurence Robertson – 291640

A full list of parish councillors, along with email contacts for local representatives, can be found on the Twyning Village website (see above).

Chairman's Report

When our Editor reminded me about this article she said, 'I do not expect it will be the same as usual.' Never a truer statement.

We are all most grateful to all those in our village who by thought, word and deed have willingly grasped the opportunity to serve our community in these impossible times. I will not mention names or organisations, as there are so many I do not know, but you know who you are. THANK YOU.

May I draw your attention to the articles herein from our Emergency Committee and from TRAC (regarding the sad news that there will be no August Bank Holiday fete this year, although the competitions will take place).

The Parish Council has managed to hold meetings by Zoom to deal with essential matters but the Annual Parish Assembly had to be cancelled.


Let us all hope that slowly and safely things will return to normal. Best wishes to you all. Stay safe.

Jeremy Horsfall, Chairman, Twynning Parish Council, June 2020

Wash your hands of coronavirus scams!

Friends Against Scams aims to protect and prevent people from becoming victims of scams.

<p>STOP. Be aware of people offering or selling:</p> <ul style="list-style-type: none">• Virus testing kits• Vaccines or miracle cures – there is currently no vaccine or cure.• Overpriced or fake goods to protect yourself from coronavirus such as anti-bacterial products.• Shopping or medication collection services.• Home decontamination services.	<p>CHALLENGE. Question communications and encourage others to do the same.</p> <ul style="list-style-type: none">• Don't be rushed into making a decision. If it sounds too good to be true, it probably is.• Only purchase goods and services from legitimate retailers and take a moment to think before parting with money or personal information.• Don't assume everyone is genuine. It's okay to reject, refuse or ignore any requests. Only criminals will try to rush or panic you. If in doubt, speak to someone you trust.• If someone claims to represent a charity, ask them for ID. Be suspicious of requests for money up front. If someone attempts to pressurise you into accepting a service they are unlikely to be genuine. Check with family and friends before accepting offers of help if you are unsure.	<p>Be a good Friend, help to protect your family, friends and neighbours from scams.</p> <p>Read it. Share it. Prevent it.</p> <p>#ScamAware #Coronavirus</p>
---	---	--



PROTECT. Contact:
If you think you have been scammed, contact your bank first.
For advice on scams, call the Citizens Advice Consumer Helpline on 0808 223 11 33.
To report a scam, call Action Fraud on 0300 123 2040.

NATIONAL TRADING STANDARDS
Scams Team

To learn more about different types of scams, visit: www.FriendsAgainstScams.org.uk

Public Rights of Way Update

Normally at this time of the year the volunteers of the Twyning footpath team are sharpening their tools and getting ready to set off once a month for a morning ramble to check on the public rights of way in the parish to ensure they are unobstructed and safe. The direction we head off in usually depends on the reports that have been received from parishioners who have found a difficulty on one of our many public footpaths and bridleways.

As this monthly routine has come to a halt due to the coronavirus outbreak, I would like to ask those of you that are using the public rights of way for your daily exercise to assist in keeping the way free, especially at the stiles. It would help enormously if you could take with you a pair of secateurs or shears to stop the way becoming overgrown, especially with brambles. If a major problem is found then please contact me. I am aware that several stiles need attention and once lockdown has finished then a plan will be put in place to give them attention.

Free copies of the Twyning parish footpath map are still available from me. Please contact me on 01684 290711 or email bobandjanisbee@hotmail.com

Bob Beetham, Twyning Parish Footpath Coordinator

Tree Warden

You will not have failed to notice that work on trees on Parish Council land has been recently undertaken by Chris Arnold after their inspection by Jim Unwin in December 2019. In addition to removing dead wood in the London Plane, they also tidied up other trees on the green after unauthorised pruning by last year's grass cutting contractors. All the trees on the green have preservation orders on them and are legally protected.



The crack willow on the Quay aside the Avon has been pollarded, This does appear a severe haircut, but I am assured that it will soon sprout new growth. A very large and dangerous Ash also had to be severely reduced on the TRAC footpath on account that in the higher canopy, branches were in a dangerous condition. Other work to make safe a large Oak and raise the canopy on the seven Limes was also completed on TRAC. As an aside, I think the new grass cutting contract is a great success.

Dave Lockett

Emergency Committee and COVID-19

The Emergency Committee (EC) responded to the emerging pandemic by establishing a support protocol for the Parish which involved the purchase and manning of a mobile phone hotline manned by members of the EC. Without any further prompting, a comment on Facebook about the hotline garnered over 50 responses, all offering help.

This led to a revision of the support available and the establishment of 5 zones, each with a zone coordinator. These 5 zones covered the major centres of population in the Parish, with outlying areas covered by continued access to the Emergency phone.

The suggestion that mutual support should prioritise family and neighbour first and emergency team thereafter has worked exceptionally well. It represents true community spirit and support in that our phone lines have been relatively quiet throughout the pandemic.

The EC are grateful to the Government via the County, Borough and Parish Councils for funding that has enabled us to purchase hand sanitiser and face masks to provide local support where it was needed.

Some of the money has been used to provide the Emergency Committee with other items, such as radios, hi-viz vests and signage which were identified as a requirement following a joint exercise held last year.

We want to thank all those who volunteered, even though many of you will not have been called upon. In particular, the 5 co-ordinators: Delta Ferguson, Richard Morley, Brent Dale, Emily Sekulic and Shaun Roberts.

Clearly we are not yet out of the woods and the possibility of a second peak is possible. So – the effort continues and anyone who requires assistance should not hesitate to ring one of the coordinator numbers or the Emergency Phone.

My thanks to all members of the Emergency Committee and finally a reminder to users of the Village Facebook page that all Covid-related articles are available together in the Announcements folder.

The Emergency Phone number is 07936 028908.

Twyning WI

Back in January we had no idea what 2020 would hold for us all. We were expecting to carry on as normal with monthly meetings; interesting speakers; craft workshops; theatre trips; Reading, Scrabble and Make & Bake Groups, as well as a whole host of County and National events we could go to if we wanted to.

January was very much an example of how we meant to go on. We had a 'Ukelele Showcase' by Phil Collins and his friend. Not 'the' Phil Collins but a very entertaining duo they were. We were certainly not expecting the boxes full of ukuleles they brought along with them. We all had one to play on, learnt three chords and even managed to accompany Phil on a whole song. Four brave volunteers had a go at Hawaiian dancing too, but I was not allowed to include those pictures!



In February, Mike Aggleton gave us a very informative and highly entertaining talk on Winnie the Pooh asking us was he 'Dignified or Disneyfied?' We all came away from that knowing more about our loveable friend and searching for some of the more irreverent versions of A. A. Milne's well-loved poems in the *Now We are Sixty* compendium. Not that we are all sixty I hasten to add!!



Our March meeting (little did we know it would be our last for a while) had us all wishing we had not eaten our dinners before we came out. Ruth Davies of our local Manor Fields Cookery School came armed with some wonderful ingredients and recipes for a Thai Cookery Demonstration. It all tasted divine!

Our Reading Group continued to meet on a regular basis enjoying varied titles each month and our Make and Bake Group held a couple of craft evenings. They were inspired to do some cookery themselves – G&T marshmallows were particularly difficult but well worth the effort!

And then we all got locked down! We are missing our monthly gatherings but not letting that stop us. Our WhatsApp group has been full of amusing jokes, video clips and memes. Our Facebook page regularly posts links to crafts and social issues for us to try and contemplate how we can help others.

We were even set our own WI Rainbow Challenge. Three of our entries can be seen on the inside back cover – not sure the pasty lasted long though. Emma told us it tasted wonderful!

So, now what shall we do for the rest of the year? Well, we had hoped to bring you a 90th Birthday Tea Dance in August but as that is unlikely to happen now, we are making plans for other Twynning WI 90th Birthday events including a Carol Service. More details to follow. I am hoping to represent the Gloucestershire Federation of WIs at the annual Huxley Cup flower arranging competition in Devon and we are all looking forward to singing *Jerusalem* with our friends again when meetings recommence. We might even make some jam when the summer fruits ripen and lots of cakes with our 10kg bags of flour from the Village Shop!

In the meantime, here is an alternative we hope you enjoy, the source is unknown as I wish I could give her (or him) some credit for it!

Alison Peake

JERUSALEM – THE LOCKDOWN VERSION

*And did our feet, pre-Covid times,
Walk upon England's mountains green?
And were our children out at play
In England's pleasant pastures seen?
And did those rainbows so divine
Shine forth upon our window sills.
For NHS, much needed here,
Amongst towns, villages and hills!
Bring me my soap, to wash my hands.
Bring me my shopping I require.
Bring me my health, and my household.
Bring me the strength that I desire.
We will not cease to fight this blight,
Nor spread this virus by our hand,
Till we have stayed six feet apart,
To free our green and pleasant land!
(with apologies to William Blake)*

August Bank Holiday Weekend

In the light of the current situation that we find ourselves in, we regretfully feel that it would be inappropriate to hold the fete this year. Whether we are in some form of lockdown or not, we are certain that social distancing measures will be advised for months to come and we can see no alternative but to CANCEL!

However all is not doom and gloom and, in the absence of the fete in its usual form, we are trying to come up with other ways that we can make the most out of a bad situation that will give us all, as a community, something to look forward to, over the Bank Holiday weekend! The first thoughts that we have come up with are to continue with the Scarecrow Competition, as well as the competitions that we usually run at the fete. The Village Scarecrow theme this year will be **KEY WORKERS**. With so many of us having spare time on our hands, it would be lovely to see as many households as possible getting creative to support us by making a Scarecrow for this year's competition.

Competition Categories

I am certain everyone has become either a star baker or an avid gardener during lockdown, so why not put your new skills to the test??

Under 6 Years

- A picture of FLOWERS (painting, collage or drawing)
- VEGETABLE SCULPTURE

6-12years

- HOUSE FOR A MOUSE – any materials can be used
- DECORATED PLANT POT – Any size
- 4 GINGERBREAD MEN

Teenager

- A PLAITED LOAF

Open

- PHOTOGRAPHY

Will be judged on the day by local photographer Jack Boskett. **Challenge Cup for overall winner from both categories.** Jack has this year set two categories:

1. **LIFE IN LOCKDOWN**
2. **ANYTHING GOES** (photo to be taken between January 2017 and current day)

All entries to be A4 (or 12" X 8") and need to be fully captioned with camera details, shutter speed, aperture and ISO

(Open cont.)

- PRESERVE – SWEET
- PRESERVE – SAVOURY
- HOMEMADE BEVERAGE
- SOURDOUGH LOAF (Any shape or size)
- VEGAN CAKE
- CAKE FEATURING ALCOHOL – **Made by a man**
- **GREAT TWYNING BAKE-OFF: 6 HOMEMADE SCONES**
Only made from the following ingredients:
225g/8oz [self-raising flour](#)
1 tsp [baking powder](#)
pinch [salt](#)
25g/1oz [caster sugar](#)
50g/2oz unsalted [butter](#), slightly softened
150ml/¼ pint [milk](#)
1 egg, beaten, or [plain flour](#), for brushing or dusting
Filling of your choice
- 4 HOMEGROWN TOMATOES
- MEDLEY of 3 HOMEGROWN VEGETABLES (min 2 of each)

SPECIAL FLORAL ARRANGEMENT CLASS – ENTRY £2.00

Challenge Cup for First Place. Judged and set by local florist Hans Haverkamp.

Be creative and create any type of flower design that makes you **HAPPY**

Space allowed: 2ft width, 1.5ft depth, 3ft height.

Your arrangement should be front facing and make good use of the space. It will be judged on the following points (in equal measure): creativity & interest; good use of colour; choice and quality of materials.

We are looking to possibly use the Village Hall to display the entries and should easily be able to monitor them being open for everyone to see. Further details on how to enter the competitions will follow in due course.

For further information please contact Lorna Herold, 294292



Children's Society

I want to say a huge thank you to Tom Sammels, who readily volunteered to help me with this year's box collections, as part of his Bronze Duke of Edinburgh Award. He organised himself to drop off the leaflets to each household advising of his imminent visit to collect the boxes. He then diligently collected, counted and bagged up the money, just before lockdown came! At which point I was advised, directly by a Children's Society representative, to halt any further box collections, and that is where we are at. So if you have not had your box collected yet, please do not feel that you have been forgotten. Your valuable donation is still (and probably more than ever once this is over) very much need by the Children's Society, so please be assured I will collect it as soon as possible. Alternatively please feel free to drop it off if you are passing. To date the money that Tom has collected is a fantastic **£333.92**

Tom has now achieved the necessary hours required for his volunteering element of his award and, although that too has been suspended this year, I am hopeful that they will still honor his achievement when we are back to normal. Thank you, Tom, for doing a fantastic job (not forgetting the new goal that you also put together at TRAC).

There are currently 36 box holders in the village but if anyone else feels that they can help by having a box, please call: 294292. Stay safe everyone.

Lorna Herold

Twyning Over-60s Lunch Club

In normal circumstances, the Club meets at the Village Hall on Fridays, during school term times when lunches are served at 12.30pm, many members arriving early to have a chat and to compare notes. The excellent meals are prepared by four teams of cooks who work hard to provide the lunches and we thank them for giving up their time. We are a self-funding organisation run entirely by volunteers. We always welcome newcomers to our weekly gatherings when two courses are served and tea or coffee at a low cost of £3.50 each – we have had to raise the cost this year due to meet increases in the price of food. However, we have welcomed some new members in recent months.

After being back for two months following the Christmas break, we had to call a halt to lunches due to COVID-19. We will return when safe to do so, but unfortunately it could be quite a while.

Sadly, we have lost a further two members – Mr Harry Leaver a few days after his 100th birthday and then Mr Jim Robertson after catching the virus in hospital. Although Harry had not been attending for a while, we miss them both very much.

We would like to thank everyone for their continued support. However, as usual, we will still be in need of people (male or female!) to step in occasionally when cooks and helpers are ill or on holiday. If anyone has time free on a Friday either early to help set up tables or between 10am and 2pm (not necessarily for the whole four hours), please let us know, either Sam Haycock on 293890 or Judith Allen on 292123.

In the meantime, take care and stay safe!



Guide Dogs for the Blind

Although we have been in lockdown for almost three months, Guide Dog puppy training has been continued, but naturally in a more restricted way.

Builder is still laid back and takes everything in his stride, but some younger puppies are finding the situation quite hard. Restricting walks to the local area, no rides on the buses and less traffic and noise on the roads has all contributed to fewer experiences that these puppies need in their early development to become Guide Dogs. Leaving them at home alone whilst shopping for a short length of time is also part of their early training, but in most households at the moment this isn't possible with children being home from school as well. They are having constant company and this is causing some puppies to develop a strong attachment to their puppy walking families. If this was seen to be the case before lockdown, then the Guide Dog Supervisor would suggest the puppy went to stay with another puppy walker or boarder for a week or two to help break this bond, but sadly at the moment this cannot happen.

Builder has helped one puppy recently who had developed a stress issue with the hustle and bustle and noise of heavy traffic as a result of the lockdown restrictions. This was done by meeting up with the puppy and his Puppy Walker over at Cheltenham, and Builder and I taking the lead as we walked along the busy Tewkesbury Road with the puppy following (social distancing rules keenly observed). After a few minutes the pup settled into concentrating on Builder and forgot about the traffic noise etc. We even managed to swap over having the puppy in the lead for a short while. It was lovely seeing them together both walking along wagging their tails. Hopefully next time puppy goes out with his Puppy Walker he won't be feeling so anxious. It is just a case now of rebuilding his confidence. Before lockdown this was at least a weekly walk for the puppy who had previously had no issues with traffic volume or noise. Hopefully Builder has helped this puppy overcome some of his fears and he will be back to normal shortly. Fingers crossed.

Usually at this time of year I mention how much we have raised with our Easter knitted bunnies but many, if not all, of the events were cancelled, so no big monies raised there. The only big thing around at the moment is me having to eat all the Creme Eggs from the Easter Bunnies – well someone had to! Thank you for still supporting Guide Dogs by putting your change in the village shop collection box and also for the milk bottle tops you leave on my doorstep. All gratefully appreciated.

Please stay safe and take care.

Brenda and Builder

Acorns Children's Hospice

Well, as you will know, this has been a very difficult year due to the coronavirus. We began the year full of hope and expectation, with a large stock of knitted animals ready to fill with creme eggs. We had the usual donation of eggs, but sadly not enough this time, so we had to purchase some. However, by 15th February we were up and ready and our 20 outlets were stocked up – we were in business! Trade was good and all seemed well for a while, and then the virus hit Britain and all our outlets were in lockdown – disaster!!

We were able to retrieve some of the animals and eggs and these were taken over to Worcester Acorns Children's Hospice, to be distributed to the families who use the hospice and were given food parcels to help them over this difficult time. However, although we were able to retrieve a lot of the eggs and animals, there are still about five places we cannot access. Also, very sadly, we had two of our collecting tines stolen when a store was broken into – not once, but twice!

Due to all of this we have not been able to count the money raised and so have not got a final total. Another problem we have is that the banks are not accepting large amounts of cash and coins until this pandemic is over. Hopefully, by the time the September issue of the Bulletin goes to press we will have been able to sort out all the problems, and have a total for you, and a cheque to present to the hospice. **Keep well and keep safe!**

Anita and Sam Haycock, 15 Paxhill Lane, tel. 293890

Acorns Hospice: www.acorns.org.uk



The Age UK Gloucestershire team is just a phone call away and we're keen to support all older people in the county during the COVID-19 pandemic.

Call our **Help Team** if you have an immediate problem. The Team provide information and guidance about a range of issues including shopping, community support local to you, prescriptions, benefits and finances and accessing health and social care. The Team will advise on how you can access support if you have recently left hospital.

Call 01452 422660. Lines are open Monday to Friday, 9am-4pm

Call our **Friendship Line** FREE if you would like a friendly chat. We know that social distancing is really difficult and lots of you are missing having someone to talk to regularly. Our staff and volunteers are on hand, with a listening ear and time to chat and we'd love to hear from you.

Call 0800 2980579. Lines are open Monday to Friday, 9am-4pm

Twyning Players

Like many other village organisations, our 2020 plans have been scuppered. Our AGM in January was very positive, finances were sound and we made plans to present something interesting to you – which should have taken place in the middle of May! None of us could have imagined what was round the corner.

Some time ago, several members of Players, along with other friends, got together to form the band 'Bucketlist'. In early March, with two other local acts, they enjoyed a successful gig in the Village Hall raising some significant money for charity, something they hope to do again next year. It was a great evening but, sadly, the last time that we were all together on a social basis. Our usual off-stage calendar is, of course, also out of the window.

We very much hope to be able to entertain you with something towards the end of the year and our schedule of rehearsals, starting in September, is ready and waiting. However, we will have to wait and see what circumstances permit.

During the lockdown, the nation seems to have taken to quizzes of all sorts in a big way. We hope that you enjoy this theatrical one.

Carol Chapman, Secretary, 293527

?? QUIZ ??

The Show Must Go On!

1. 'Kiss Me Kate' is a musical version of which Shakespeare play?
2. A modern reconstruction of which theatre opened in 1997, approximately 750 feet from the site of the original theatre that was demolished on 1664?
3. Which British playwright wrote 'Hay Fever'?
4. What word is used to describe that a theatre is closed?
5. Who was the 18th-century Drury Lane theatre manager who started a famous club?
6. What superstitious alternative is used in the theatre to wish someone good luck?
7. Who wrote the play 'Under Milk Wood'?
8. What name is often given to the amateur theatrical club, founded on 1883, that's run by Cambridge university students?
9. In 1998, which novelist bought The Playhouse for just over one million pounds?

10. Major Metcalf, Detective-Sergeant Trotter and Mollie Raiston feature in which play by Agatha Christie?
11. In which English county is there an open-air theatre, called The Minack, on a rocky granite outcrop jutting into the sea?
12. In Shakespeare's 'Othello', what is the name of Othello's wife?
13. Who wrote the play 'Cat on a Hot Tin Roof'?
14. What name is given to the room in a theatre that functions as a waiting room and lounge for performers?
15. What was the Criterion Theatre used for during World War Two?
16. Cobweb is a fairy in which Shakespeare play?
17. Which London theatre would you be at if you were at the centre of Seven Dials?
18. What was the name of Andrew Lloyd Webber's theatre company where Prince Edward worked as a production assistant in the 1980s?
19. Which Elizabethan theatre, built in 1587, was the first purpose-built play house to ever stage a production of any of Shakespeare's plays?
20. Whose ashes were laid to rest under the London Palladium stage with a blue plaque commemorating him on a nearby wall?

Answers are on page 30

Learn to Save a Life!!

Basic Life Saving Skills Training Courses, available in Tewkesbury



- CPR and Defibrillation
- Mental Health First Aid
- Fire Safety and Practical Fire Extinguisher
- Emergency First Aid at Work
- Emergency Paediatric First Aid

Many of our courses are suitable for all ages and all abilities



The
Devereux Centre

Contact us for more information

www.thevereuxcentre.co.uk

T: 01684 214333

E: info@thevereuxcentre.co.uk

We also rent out modern Consultation, Counselling, Conference and Meeting rooms.

If you are interested in using our facilities, please contact us.

Twyning School

Since my last report a lot has happened! Sounds a bit like something the children would write in a masterful piece of understatement. It all started with a call from Headteacher Richard Vaughan to say that he would be leaving at the end of the summer term. I hasten to add that he had not fallen out with the Governors but he felt the time was right to move on. Some of you know that Richard has acted as a Schools Inspector and has also assisted schools that needed improvement, and he has now decided to concentrate on those roles. In the interim, he had to take time off for medical treatment and just as we were planning for his return, Coronavirus intervened. Richard will now not be returning to us and Acting Headteacher is in the hot seat! We do plan that as soon as practical we will invite Richard back for a farewell from the community that he has served for so long.

It was fortunate, not knowing what was ahead of us, that we moved swiftly to appoint a new headteacher. We had more applicants than we could ever have anticipated and a strong field to boot. There was just one internal applicant, the serving deputy, Lucy Halling. In these circumstances the governors had to appoint with scrupulous integrity but there was no doubt in our minds and of the Local Authority representative that we had the right person for the job. With Richard heading for some time off, Lucy had to hit the ground running as the Acting Headteacher. The decision was then made to seek a new deputy and again we attracted a strong field and an appointment was made, effective in September. So whatever else, we start the new academic year with a strong crew.

Since lockdown the staff have done a magnificent job in supporting home schooling whilst staying open for the children of key workers. As I write preparations are well in hand for a slow return to normal service but you are all aware of the many issues that have to be addressed on the way. In the meantime there have been other challenges, as Carol Chapman reports:

*In 2019, the school field was invaded by mining bees and the children have been unable to use the area for over a year. Experts have advised that the only solution to dealing with the bees is to dig up the site and work has just begun to replace the field with an all-weather sports pitch. This will be hugely beneficial for the health and wellbeing of the children, providing a large outdoor area which can be used all year round for playtimes, lunchtimes and PE lessons. This is an expensive project. We do have some funding from the local authority but urgently need to find £10,000. Our fundraising plans, made earlier this year, have been scuppered by the coronavirus situation. **If you can help us in any way, please contact school governor Carol Chapman, 293527.***

I should add a well done to our parents and guardians – keep safe and well.

Ron Hesketh, Chair of Governors, 299773 / 07745 758899 / ronhesketh@gmail.com

TRAC

TRAC is a very quiet place at the moment... Sadly, just as we were beginning to see the site being used by more and more people, with the start up of new Netball and Football clubs, we had to close the whole site due to the Covid-19 pandemic, but hopefully it won't be too long before we are able to start using the facilities again.

For those of you who are members, we have held your current membership over until the end of June and hopefully we will be in a better position to sort renewals in July. By then we hope that the lease or licence for the top site will have been formally agreed with the Parish Council and that we will be able to start using the Kilmore Field for football and athletics, together with the school having the use for their sports activities during school hours.

Some will have noticed that a gate has been installed between Brockeridge Paddocks and the top site of TRAC. Please note that its usage will be in line with the current regulations of the rest of the TRAC site.

When TRAC was granted use of the site there were restrictions put in place by Tewkesbury Borough Council. One of these restrictions was the opening hours, which many of you may not even realise exist (they can be found on the sign as you enter the site). Outside of these hours the site has to be locked. This is also a condition set down by our insurance. Another restriction was that NO DOGS are allowed on site. As a committee of volunteers, we have to ensure that these restrictions are adhered to in order to ensure we are not in breach of the Terms and Conditions of our lease. We hope that you will work with us in these matters to ensure the site runs smoothly.

(Usual) Opening times are:

8.30am–9.30pm (or dusk) Monday–Friday

9.00am–9.30pm (or dusk) Saturdays

10.00am–8.30pm (or dusk) Sundays and Bank Holidays

CCTV is being installed to cover the top site and signage, adjacent to the new gate, is due to be erected soon outlining the Terms and Conditions of use.

Village Celebration post-lockdown!

Unfortunately no one really knows what the immediate future holds and how long restrictions will be enforced upon us. BUT we just want to let you all know that we have already started to make plans to ensure we have ALL have something to look forward to! We are aiming to have a celebration for the whole village, in the way of an 'Afternoon Tea Party' on Kilmore Field when we are truly out of lockdown. We organised something similar for the Jubilee which, despite the weather, was a great success, so please sit tight and... watch this space!

Longdon District Probus Club

I guess it won't come as a surprise to learn that regular meetings, and other Club events, have been put on hold for the foreseeable future. Club meetings routinely took place in one room and members sat side-by-side, therefore it was deemed imperative to follow Government guidelines and cancel our weekly gatherings. The health and well-being of our members has the highest priority.

Members do miss our regular meetings and the associated talks, but hopefully in the not-too-distant future this can all be resurrected. In the meantime, weekly meetings are held using video conferencing, and after getting a little way up the 'learning curve' these meetings are now proving successful. We are lucky to live in an age when it's now possible to keep in touch visually with friends and family, but of course this is no substitute for physical contact (particularly with grandchildren).

In the meantime, stay healthy.

Roy Thomas



HALFORDS TRADITIONAL
AWARD WINNING
BUTCHERS

At Halfords Traditional Butchers,
we offer meats sourced and
produced as locally as possible

Open Monday - Friday 8.00am - 5.15pm
Saturday 8.00am - 4.00pm





Award Winning produce including our GOLD Award home cured bacon, award winning sausages, black pudding, sausage rolls and much more

- Homemade pork pies and gravy pies, sausage rolls, faggots and pasties cooked daily
- Your stocks of British, free range and local produce including Gloucester Old Spot Pork
- Seasonal game, exotics range and frozen fish selection also available as well as much more at your friendly local traditional butchers.
- Special offers available in store and bulk buy offers. Now offering full BBQ selection along with our extensive range.

telephone: 01684 299 933
info@halfordsbutchers.co.uk www.halfordsbutchers.co.uk
45 High Street, Tewkesbury, Gloucestershire GL20 5BH

Twyning Playgroup

Prior to the lockdown we had a fun and exciting term at Playgroup. We enjoyed messy play with gloop and shaving foam with gel beads. We made play dough and had lots of sand and water play, investigating floating and sinking. Our adult-led activities included making story maps in the Pie Corbett method – assisting in the development of communication and language skills. We also did some cooking – visiting the shop to buy ingredients before making cakes and also making and decorating biscuits.

We celebrated Chinese New Year with lots of activities including a Chinese restaurant in our role-play area with themed snacks, and we investigated Chinese writing and learned about the animal race for the Chinese zodiac. We had our own animal race and tried out our own dragon dances with large scarves! We celebrated Epiphany in our French session with the children trying some special cake and one of the children, after finding a crown, got to be king of playgroup (for the day!) following the French tradition.



At Forest School we learned about litter and recycling and did lots of exploring – looking for bugs with magnifying glasses, learning about nature and playing games. We used tools and also made fires for cooking. We followed the Forest School rules ('No picking, no licking and be careful with the sticks') really well. We now have two members of staff qualified as Forest School Leaders. We also visited Twyning School where the children always enjoy using the play area and the large equipment to play on, and we started music sessions with Jeanette which involve lots of songs to sing and instruments to play. We visited Downfield Farm and the children had a wonderful time. We saw lots of animals and birds including ducks, geese, chickens, sheep with lambs and a calf that was only a few hours old! We learned about the animals and noticed the numbers on the sheep and lambs and found that these matched the lamb to the mum. We sang 'Old MacDonald' on the walk back to playgroup!

Following the children's interests we have been looking at a theme involving 'people who help us' and we had visits from the dentist as well as a police car and fire engine which the children really enjoyed investigating!

During the lockdown we have continued to keep in touch with parents and children using technologies such as our online learning journals.

Twyning Parish Church & Twyning Chapel

The Parish Church of St Mary Magdalene

Frustrated of Twyning.... would clearly signal my response to the instruction to lock the Parish Church since the end of March. I recognise that keeping churches open in urban areas would have been difficult and as we know you can't have one rule for one and not for another!

Church registers, as well as recording the services conducted and the numbers attending, can also be historic documents of the life of the community. On occasions I may record significant national events or exceptional weather events. On Sunday 22nd March, instead of noting Mothering Sunday and a family baptism, I recorded the first closure of Twyning Parish Church since 1208! On that occasion, and never since, churches, then all Roman Catholic of course, had to cease Mass on the orders of the Pope in a dispute with King John over the appointment of the Archbishop of Canterbury. So closure is unusual and worth noting! But plague has not been an infrequent visitor and is probably the reason for the separation of Churchend from the newer settlement of Twyning. To say our Parish Church has seen it all before is sadly true, but it is not a museum! Since the lockdown worship has been provided on-line and by telephone from the Abbey. Our own community has had a weekly newsletter since the suspension of the Parish Magazine, and it is not too late to join our widening circulation. With both hard copy and delivery by email it can occasionally reach places beyond the Village Facebook! Just contact me if you want to go on our list. There is no danger of you being dragged into church!

What is ahead. Well God knows... but at time of writing nothing is coming through to me yet. I am hopeful that sometime in the summer the church doors will open again, but like everything else we must expect normal service to be a very gradual process. I don't want to talk about 'new normal' because the phrase is a little over-worked and I'm not sure what it means. But it will be a delight to note in the Register that the doors were once again unlocked and in the meantime the residents of Twyning had been served well by those in the community who never closed, whatever their role.

Take care & God bless

Ron

The Venerable Ron Hesketh CB
ronhesketh@gmail.com 01684 299773 / 07745 758899

Twyning Chapel

Like other village organisations, we have not been able to meet together during this challenging time, which we have missed. However, many of us have enjoyed 'virtually visiting' other churches – both local and far away – as many larger churches do online services. They are often on YouTube and are therefore easy to access, and you can either join in live or watch at a later time. We have also enjoyed a couple of live Zoom services – facilitated by Steve Hutchinson from Scripture Union who has provided a family friendly and lively service – with others being able to take part by reading and learning Bible verses. Thank you to Steve and everyone for joining in.

Sadly we have lost one of our older members, Jean Plumridge, who died on 5th May after a long period of ill health. We remember Jean for her fabulous sense of humour and her love of singing, and as a chapel family we pray for her husband Keith at this time.

Like everyone else, we hope and pray that we will soon be able to meet together again safely.

Twyning Village Hall

Despite the Covid-19 enforced closure of the Hall, things have not stopped completely. Taking advantage of the quiet period, the Playgroup have been having an equipment review and have constructed a new wooden shed for housing their large play equipment. Thanks go to Tim Kania for the groundwork and Ben Nottage for the shed construction and fitting out. Not to be outdone, Lucinda Morgan has been washing the equipment previously left outside and then for the best part of a day, jet washed the outside area, which from the new look was something long overdue.

Internally things have moved on. With thanks to Marienna Lockett and Lucinda all 125 chairs have been cleaned. As many of you will have noticed from Facebook (we got 112 likes to the picture!) the hall floor has had a very professional makeover and now looks like new. An obvious problem then arose as the chair feet were in no condition to avoid damaging the floor. With grateful thanks to Sinclair & Rush for their advice and a considerable discount, the four different pads were identified and the old pads have now been replaced – all 500 of them!

The Village Hall cannot function without the volunteer Committee. **We are urgently seeking a replacement for our Booking Clerk and there is a vacancy on the Committee for a trustee.** Anyone who feels they may be able to help is asked to contact the Chairman on 297565. We hope, like everyone else, that the pandemic is soon under control and that our user groups will all be back up and running.

Dave Lockett, Chairman, Twyning Village Hall Management Committee

Freecycle Saturday – coming soon!

Keeping unwanted items out of landfill

I know that many in the village are active recyclers and as a result I recently asked members of the Twyning Community group page on Facebook if they would be interested in trying out a scheme to reduce the amount of stuff that ends up in landfill. It is a really simple scheme and one that has been running in other areas of the UK and in various other countries for quite some time.

On the first Saturday of every month after 9am, householders leave out at the end of their drive any item that they no longer want or need. Anyone is then free to take the items away. The scheme is good as it enables items to potentially have a second life, and because the local scrap collectors and upcyclers know when items will be left out, they usually just drive round and collect any larger items etc. However any item large or small can be left out and anyone is free to walk around to see what items are available.

As a result it is very good news that the response to the Facebook post was overwhelmingly positive and it is therefore hoped to get the scheme up and running just as soon as all COVID-19 lockdown restrictions have been lifted. Notice that the scheme is starting will be posted in advance on both the Twyning Community and Twyning buy and sell Facebook pages.

Given that the local recycling centres are only just starting to open I am sure that many people will have items that they will be wanting to get rid of so this scheme might also save you (and the planet) a car or van journey?

With regard to how the scheme works, a few points:

- ◇ On the Wednesday before each planned Freecycle Saturday a reminder will be posted on the Twyning Community & Twyning buy and sell Facebook Pages. This will also provide an online information point for anyone leaving items out for collection to post their street name or location so that potential 'collectors' will know which areas to go to.
- ◇ It is suggested to put smaller items in a box marked 'Freecycle Saturday' and to similarly label larger items so that it is clear to collectors which items have been specifically left out and can therefore be legitimately taken away.
- ◇ Please ensure that items left out are not causing any obstruction to the public highway or pavements or are causing any sort of trip or other hazard.

- ◇ No dangerous items (knives, chemicals, asbestos etc.) should be left out. These should be disposed of responsibly and as normal
- ◇ Depending on the rules of the 'new normal', collectors might also want to continue to minimise touching any items left out unless actually wanting to take them. Collectors should also continue to adhere to all official advice for handling any collected items as required e.g. use of gloves, allowing any item taken to 'stand' for at least 72 hours before processing or use, strict hand washing etc.
- ◇ Collectors please only take items that you will genuinely use or are able to do something with. Better to leave an item for someone who can actually use the item rather than taking an item as a 'maybe' or 'just in case' which then finds its way into landfill via another route.
- ◇ **Any items taken are at the risk of the collector.** This is a community initiative so there is no third party or other acceptance of any responsibility or liability for loss or injury of any kind relating in any way to this scheme or by anyone involved.
- ◇ Finally the scheme is primarily intended to reduce the amount of items that are sent to landfill each year and is not intended to replace the donation of good, clean and resaleable items to charity shops or other good causes which continues to be very much encouraged as normal.

Wendy Rogers

Village Scarecrow Competition

Everyone is invited to enter this year's Village Scarecrow Competition being held on August Bank Holiday Monday.

The theme this year is: **KEY WORKERS!**

Entry is just £2 per Scarecrow – details on how to enter to follow.

All entries must be in full view by 10.00am on Monday 31st August 2020, so that judging can take place.

Let's see if we can get the most Scarecrows ever!

GOOD LUCK!



Twyning Memories – A Response

By Another Villager!

As an old local I enjoy reading Twyning Memories in the Bulletin. The report in the last Bulletin caused me to laugh. The shoe-mender at Shuthonger, Mr Roberts, was my Uncle Wilfred (Wilfer to me). He was my dad's brother and he lived with my family.

As a child, I was told that he was in a wheelchair because of polio. The 'Memories' article said he had a cricket injury – and he was a keen sportsman, including football, tennis and cricket. However, as an adult I learnt the truth from my mum's sister. Uncle had a mischievous sense of humour, and as a young man in his 20s he tried to climb a drainpipe on the front of a property on Tewkesbury High Street, to tap on the window of a girl's bedroom! Unfortunately he fell heavily, and landed on an iron grid over a cellar, which broke. He then biked home to the family farm at Fiddington. The next morning his father called him to start milking and he couldn't walk. He had broken his back, and he spent the rest of his life in a wheelchair.

I remember his wheelchair was wooden, with a split cane seat and backrest. Mum made cushions for it. He mended shoes in a shed that dad had made for him. It was lit by a paraffin lamp, and he had a wireless powered by an accumulator – there was always music in the shed. In those days we had no modern conveniences – we had gas lighting and a bucket toilet down the yard past the pig pens. There was no bathroom and the bath was unplumbed in the back scullery with a curtain screen. Hot water was bucketed from the gas boiler, which was used to boil our sheets. Life was hard, and for Uncle there were no modern mobility scooters, stairlifts or hoists.

In his 50s, Uncle went to live in a residential home at Leamington. He then learnt to use a printing press that belonged to a fellow resident who had MS. Uncle had a more interesting life there as there were entertainments, and he was one of the more able-bodied residents. In latter years he drove a blue three-wheeled invalid carriage and was able to drive back here for his holidays. He died in his 70s whilst staying locally with his sister. I think my lifelong love of music and handicrafts come from all the hours spent in his shed when I was young.



Old photographs of Twynning Green, kindly provided by the late Beryl Chescoe

2nd Twyning Scout Group



Like everything else in society, Scouting has had to adjust to the challenges of lockdown but I am sure you will be unsurprised to hear that with our motto of 'Be Prepared' this has not stopped Scouting taking place. A great example of this has been the 'We Will Survive' county camp on VE day when circa 3000 Beavers, Cubs, Scouts, Leaders and their families (including many Twyning families) camped at home

but came together virtually to celebrate VE day. The design of the official badge for the event was one of the activities and the design competition was won by Sam – a Beaver from Twyning!! Well done Sam.

Ian Palmer – theianpalmer@gmail.com

Beavers – Age 6 to 7 (Thursday) – Anne Green thefamilygreens@btinternet.com

The term started normally with meetings at school and working towards our skills challenge badge and health and fitness badge. Since lockdown, we have been meeting virtually every Thursday at 6pm. Parents have been sent a virtual programme and we have a Zoom meeting. In this time, Beavers have completed their skills award, some have completed personal challenge and we are working towards outdoor and adventure challenge. The experiment badge saw Beavers learning about senses, growing and eating cress and I have received some great photos of volcanos erupting all over the village! We also had our first virtual sleepover during the first weekend of lockdown. I have virtually awarded over 100 badges since lockdown including 9 Bronze Chief Scout awards. Well done to all those Beavers who have achieved this. Although it has been a difficult time for all, I have to thank all Beaver parents for their fantastic support and involvement with the virtual programme, as some activities have taken a lot of preparation while many are still working. Thank you so much for allowing scouting to carry on.

Cubs – Age 8 to 10 (Thursday) – Julie Catchpole – jdcatchpole@yahoo.com

This term at Cubs has been a strange one with the virus stopping us meeting up weekly and cancelling our camp and plans for outdoor pursuits. The county has provided us with scouting activities that we can do at home through the 'Carry on Camping' badge and 'We Will Survive' camp out at home. Those Cubs that participated will not only receive unique badges but have these activities counted toward their activity and challenge badges. I saw by the families' photos that much fun was had and no doubt all were pleased, including myself, that the weather had been so kind whilst we camped outside in our tents. The weekly Thursday NHS clap and VE day celebrations have also been a great time for the Cubs to wear their uniform and participate. Some Cubs have even done a 'hike to the moon' in their back garden. The rest of this year will see us concentrate on helping our older Cubs complete the Silver Chief Scout Award while our younger Cubs continue to build up their badges. I hope everyone remains safe and well.

Scouts – Age 10 ½ to 14 (Thursday) – Lorna Herold – l.herold@btinternet.com

The Scout motto is 'Be Prepared' but I don't think any of us truly were prepared for the last couple of months! Unable to enjoy the summer programme, where some of our older Scouts were hoping to complete their Chief Gold Scout Award, we are currently having to find other ways for them to achieve their goals. In the absence of our usual meetings, some have taken the opportunity to take part in a special 'Carry on Scouting' badge, which was devised on a national basis to keep Scouts busy during lockdown. This challenges Scouts to complete 15 challenges from a choice of 30. I have received photos, videos and Whatsapp messages showing me the dens that they have built and slept in, the catapults they have made, the board games they have devised, the trails they have set and one has even started to make her own candles.

As for what lies ahead, and when we return to Scouts, we have no definite information and will continue to follow Government advice, but the safety of everyone involved has to be our priority. So whether we are able to enjoy Scouts in some way over the summer, or we have to wait until September (or longer), we will do our best to keep everyone informed. In the meantime, if you have spent your lockdown learning new skills and would like to share them with the Scouts once all this is over, we are always looking for volunteers to join our team.

Explorer Scouts

Scouting, like everyone else, has been affected by the pandemic. Our normal face-to-face meetings and activities were put on hold at the same time as the schools closed, and are unlikely to resume until September. It is hoped that the annual London Monopoly Run challenge will be able to go ahead in October (postponed from April) but the National Air Rifle Competition has been cancelled for 2020.

That doesn't mean that Scouting has stopped altogether. Explorers have been meeting via video link on Zoom, with activities such as quizzes and a virtual 'escape room' team activity. We also took part in the



Gloucestershire County virtual camp, to celebrate VE Day, together with 3000 other scouts of all ages throughout the county, camping out in their gardens or in dens inside the house, with online activities for each of the age group sections. In the meantime, we have been checking and maintaining all our kit as we look forward to getting out for adventurous activities and learning new skills again in the (not too distant) future.

Dan Orchard, Explorer Scout Leader, 298788, dan@twyning.net

Bulletin admin

Submissions of articles and photographs relating to Twyning are always welcome for the Bulletin. If you run a club or stage an event in the area let us know! You don't have to be part of a club or organisation to contribute, though – the Bulletin is truly a community effort for everyone to share in.

If you'd like to advertise in the Bulletin or be added to the email contact list for reminders, please contact the editor (see below for contact details).

Deadlines for the year's Bulletins are:

15th January
15th May
15th September

The Show Must Go On! – the answers

- | | |
|------------------------|-----------------------------------|
| 1. Taming of the Shrew | 11. Cornwall |
| 2. The Globe | 12. Desdemona |
| 3. Noel Coward | 13. Tennessee Williams |
| 4. Dark | 14. Green Room |
| 5. David Garrick | 15. BBC Radio Studio |
| 6. Break a Leg | 16. A Midsummer Night's Dream |
| 7. Dylan Thomas | 17. Cambridge Theatre |
| 8. Footlights | 18. Really Useful Theatre Company |
| 9. Jeffrey Archer | 19. The Rose |
| 10. The Mousetrap | 20. Bruce Forsyth |

Back cover: Top: Cow and calf (Photo by Roy Thomas)

Bottom: Hillend Common (Photo by Dave Lockett)

Twyning Bulletin is edited and designed by Fiona Thornton:

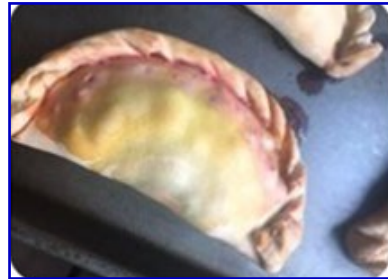
editor@twyningcouncil.co.uk; tel. 294632

Distribution organised by Mary Heeks: 01684 293566

Published by Twyning Parish Council. Printed by CLK Media Limited.

Webmaster: Bill O'Dell wro@idspartners.co.uk

Dates, information and prices quoted are believed to be correct at the time of going to press but are subject to change and no responsibility is accepted for any errors or omissions. Twyning Parish Council does not accept responsibility for any material submitted, whether photographic or otherwise. All material is sent at the owners risk and whilst every care is taken, Twyning Parish Council will not accept liability for loss or damage. The Bulletin or Twyning Parish Council does not endorse any products or services advertised and will not accept any advertising that implies or expresses the Bulletin's or Twyning Parish Council endorsement of a product or service.



Above: WI Rainbow Challenge entries (see pp8-9)
Below: The Avon near Twyning (Photo by Bob Walton)

